

Task Setup and Activation, File Transfer Tasks, DNP3 Protocol

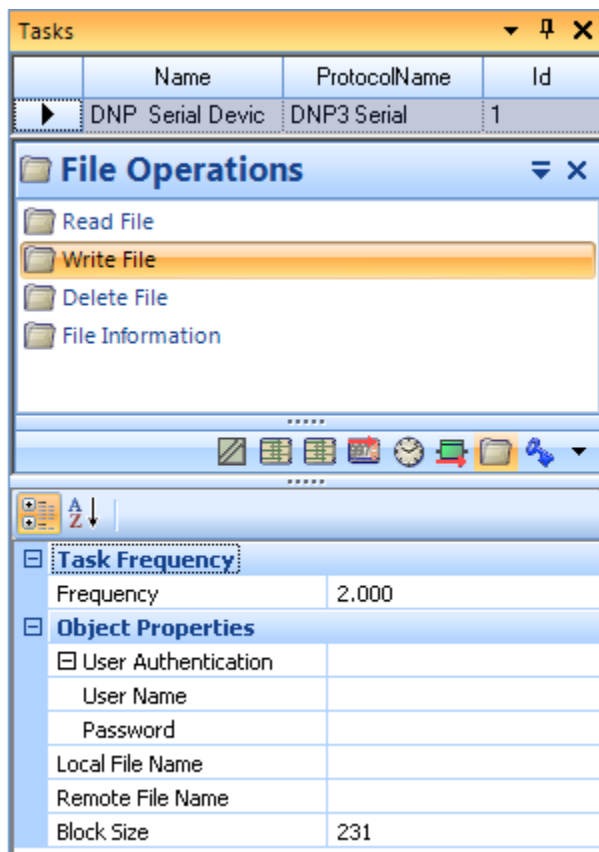
For applicable protocols, the ASE200 can initiate and accept File read, write, and directory requests between a master and remote device.

In both *Exchange Mode* and *Task Mode*, the ASE2000 identifies messages detected during Line Monitoring operation.

In *Exchange Mode*, the ASE2000 configured to send a single message with a manually coded application data portion. Multiple messages cannot easily be automatically sequenced for a complete file operation.

In *Task Mode*, the ASE2000 can be used to sequence through all messages to read or write a file, or to perform directory operations. The remainder of this section describes these *Task Mode* file operations for NDP3 protocol.

A sample Task Menu for the File Operations group of tasks is shown below.

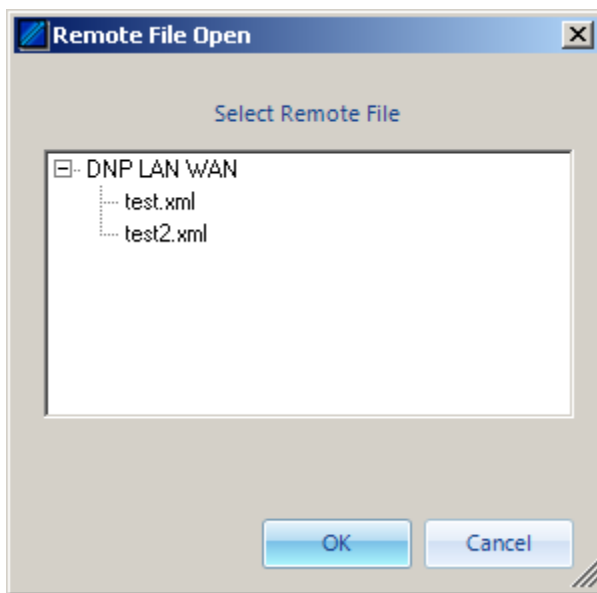


To initial a transfer, the user must enter a file name for the local machine and a file name for the remote device.

The local file is entered in the **Local File Name** property and can be a complete disk and path specification. The local machine can be browsed by clicking in the **Local File Name** field and selecting the browse target at the right of that field.

Local File Name C:\tmp\xinvalidate.xml ...

The remote file is entered in the **Remote File Name** property. If a file name is not known, the ASE2000 can browse the remote device using appropriate protocol commands (assuming directory operations are supported by the protocol and device). A remote browse operation is initiated the same way as a local browse operation: click the **Remote File Name** field and select the browse target at the right of that field. This initiates appropriate communication which, if successful, results in a menu like that shown below.



This shows all files reported by the remote device. Select a file and **OK**. The selected file name is placed in the **Remote File Name** field.

Remote File Name test.xml ...

Note that the browse operation only fills in the **Remote File Name** field. It does not initiate the selected task: Read File, Write File, Delete File, File Information, or other as supported by the selected protocol.

Once the files names applicable to the selected task have been entered, start the file operation as you would start any other task. Messages are interchanged with the remote device until the operation completes (successfully or with errors). The Line Monitor and Messages Views provide additional information. As an example, following is an expanded **Messages View** for a successfully completed DNP3 **File Information** task.