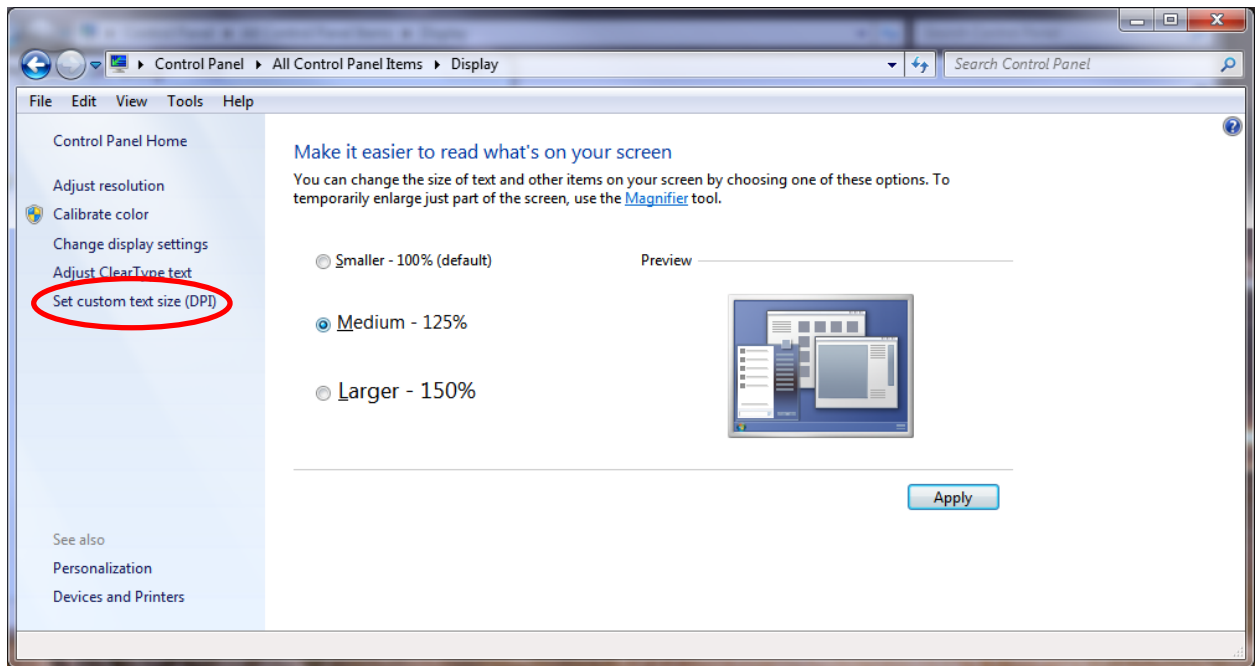


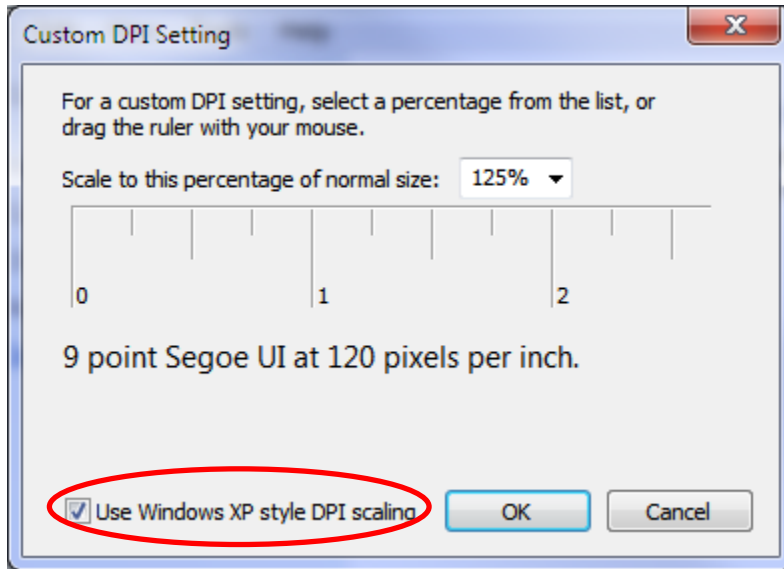
## Change DPI Settings in Windows 7

If your screen appears shifted, or GUI controls appear hidden by the borders, changing the DPI settings and click the “Use Windows XP style DPI scaling” check box will correct these problems.

1. Click on Start then Control Panel.
2. Select “Display” icon.
3. On the display page, select the font size option that you like.



4. Click on “Set custom text size (DPI)” line



5. Check the “Use Windows XP style DPI scaling” check box, then click OK button
6. Click Apply button and log off then log on for the change to take effect.

