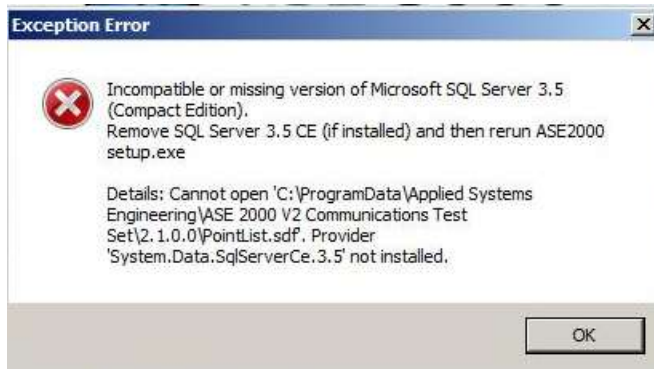


## Issue:

Problems with Microsoft SQL Server Compact Editor (CE) causing the following (or similar) to appear when installing ASE2000 Version 2:



## Cause:

**Microsoft SQL Server Compact Edition** is either not installed or was installed incorrectly. The errant procedure resulted in the product not being registered correctly, or being incompletely registered.

## Correction:

- Using the Microsoft Control Panel, remove **Microsoft SQL Server Compact 3.5 ...**
- If installed, also remove **Microsoft SQL Server Compact 3.5 ... x64 ...**
- Reinstall the ASE2000 Version 2 software, which will correctly install **Microsoft SQL Server Compact 3.5**