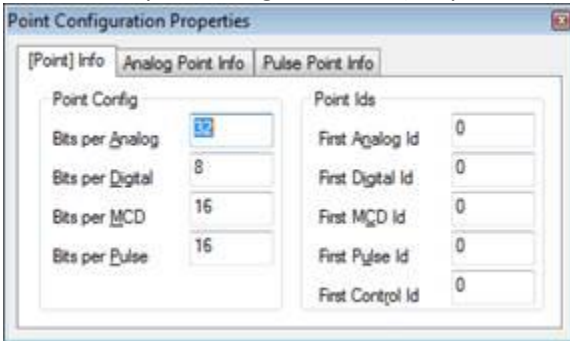


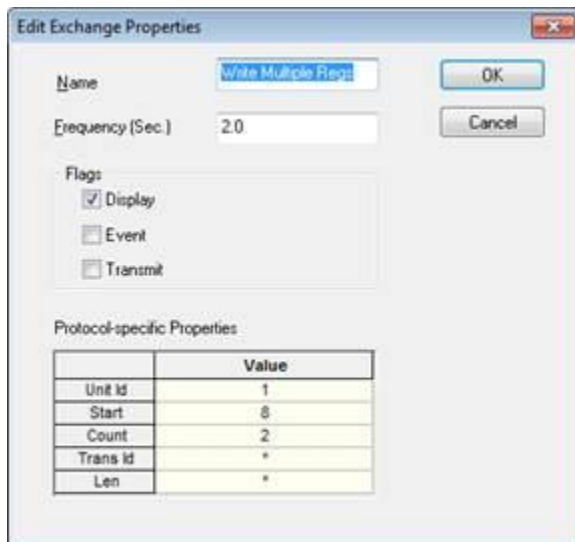
Modbus TCP was not originally designed for 32 bit analog values, but the ASE2000 Test Set can accommodate this behavior.

To send a 32-bit analog value using Modbus TCP protocol ...

- Set the Bits per Analog size to 32 (Properties → Point menu)



- Edit the Write Multiple Regs exchange Properties
 - Right-click on the Write Multiple Regs exchange and select Edit Exchange Properties
 - Set the unit ID
 - Set the Start (address) to 8 – Modbus will add 40001 to this number producing 40009
 - Set the count to 2 – this references two 16-bit Modbus registers



- Edit the Write Multiple Regs exchange Definition
 - Right-click on the Write Multiple Regs exchange and select Edit Exchange Definition
 - Select (click) Analog Points and Click the Properties button

