

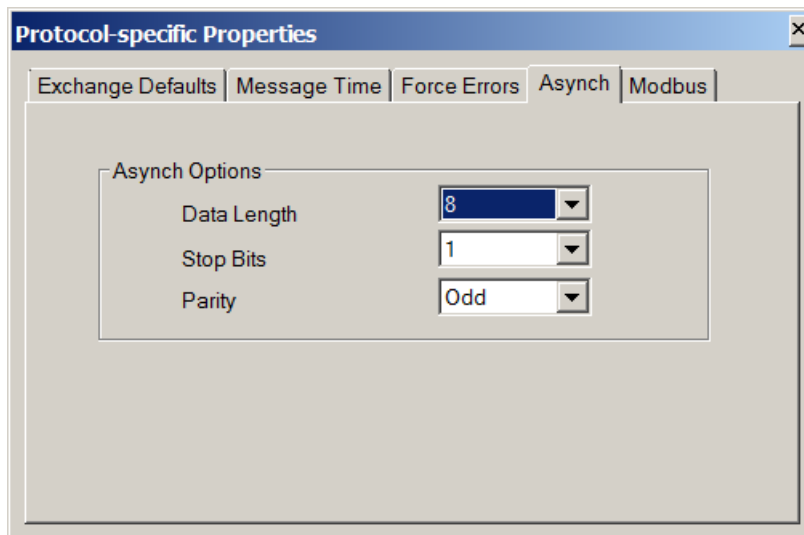
Modbus RTU Parity

December 18, 2016

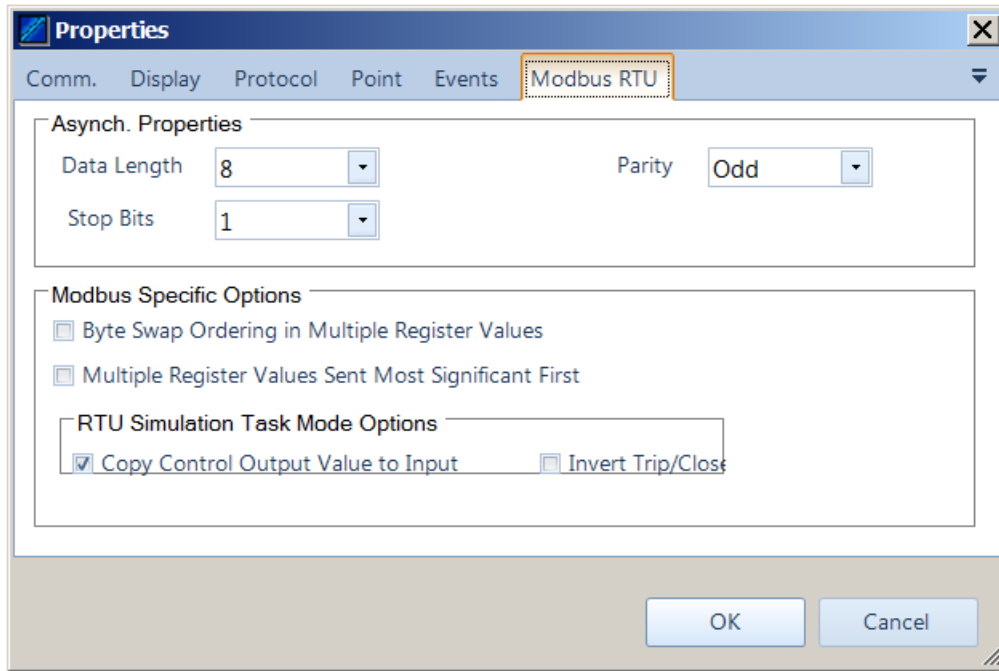
Setting Modbus Parity

Modbus RTU protocol allows data bytes to be send with odd, even, or no parity. The protocol definition allows any choice and the standard does not have a recommendation. If you are having basic communication issues or get framing/parity errors on reception, it may be because the parity is wrong. You can set the parity from:

ASE2000 Version 1, Properties/Protocol Specific/Asynch



ASE2000 Version 2, Tools/Properties/Modbus RTU



The image shows a screenshot of a software dialog box titled "Properties". The "Modbus RTU" tab is selected. The dialog is divided into two main sections: "Asynch. Properties" and "Modbus Specific Options".

Asynch. Properties

- Data Length: 8
- Parity: Odd
- Stop Bits: 1

Modbus Specific Options

- Byte Swap Ordering in Multiple Register Values
- Multiple Register Values Sent Most Significant First

RTU Simulation Task Mode Options

- Copy Control Output Value to Input
- Invert Trip/Close

At the bottom of the dialog are "OK" and "Cancel" buttons.