

BCOM-USB Device User Guide

Document Version 1.3

July 2010

!!!!!!! WARNING !!!!!!!

**Do not connect the BCOM-USB device to PC before reading
these instructions**

**NOTE: For use with Windows 7 systems, follow the I/O driver installation
instructions specific to Windows 7.**



Property of Applied Systems Engineering, Inc.

This document and its associated distribution media contain proprietary information of Applied Systems Engineering, Inc. and may not be used, copied, or distributed in any form without the written permission of Applied Systems Engineering, Inc.

Copies of this documentation may be made for internal use by the legally licensed owner only.

© 2008, 2009 Applied Systems Engineering, Inc. All rights reserved

Table of Contents

INTRODUCTION.....	5
OVERVIEW	5
TECHNICAL SUPPORT.....	5
BCOM-USB DEVICE.....	6
OVERVIEW	6
DEVICE DESCRIPTION.....	6
RS-233 PIN-OUT	10
I/O DRIVER INSTALLATION	11
<i>Windows 2000 / XP / Vista I/O Driver Installation.....</i>	<i>12</i>
<i>Windows 7 I/O Driver Installation.....</i>	<i>20</i>
ASE LICENSE/FIRMWARE UPDATER	32
OVERVIEW	32
LICENSE/FIRMWARE UPDATER OPERATION	33
NEW LICENSE FILE INSTALLATION.....	34
NEW FIRMWARE INSTALLATION	35
LICENSE/FIRMWARE UPDATER PROGRAM INSTALLATION	37
DOCUMENT REVISION HISTORY	38



This page intentionally left blank

INTRODUCTION

OVERVIEW

This manual is intended for users of the BCOM-USB serial communication device and persons who must install the BCOM-USB I/O driver and may also need to update the BCOM-USB license information or BCOM-USB firmware.

The manual contains a description of:

- BCOM-USB Device Description
- BCOM-USB I/O Driver installation
 - Windows 2000 / XP / Vista I/O Driver Installation
 - Windows 7 I/O Driver Installation
- ASE License-Firmware Updater installation and use

The ASE License-Firmware Updater program is a new addition to the ASE2000 Test Set kit that is used to install new license information that is resident in the BCOM-USB flash memory and to install new firmware releases for the BCOM-USB device.

TECHNICAL SUPPORT

The BCOM-USB device is intended for use only in conjunction with the ASE2000 Communication Test Set application, Version 1.47 and higher, and certain other applications developed by ASE. No programming support will be provided except on applications approved by ASE. It is extremely important that the BCOM-USB device is properly registered with ASE so that firmware updates for the BCOM-USB device will be distributed to the correct persons.

BCOM-USB DEVICE

OVERVIEW

BCOM-USB is a 2-channel, serial RS-232 device that connects to a PC through a USB port. This device is intended to be used with the ASE2000 Communication Test Set and replace the BCOM-PCMCIA board which, due to the eventual obsolescence of the PCMCIA / CardBus interface on PCs may not be usable on newer PCs. In addition to handling the traditional byte oriented protocols such as DNP3, Modbus, IEC 870-5-101, etc. the BCOM-USB will also handle bit-oriented protocols such as Conitel 2020, CDC Type I and II, as well as SDLC/HDLC protocols.

Please see the ASE web site at <http://www.ase-systems.com/DNP-3-protocol/DNP-3.asp> for a complete list of supported protocols.

DEVICE DESCRIPTION

The BCOM-USB device kit consists of the following items:

- 2-channel BCOM-USB device
- Two DB-9 Female / DB-25 Male Cables
- 6' USB Cable with standard A / B connectors
- 6' Power cable to power the ASE 2-channel Bell-202 test set modem



BCOM-USB Components

When provided as an “Upgrade Kit” to an existing ASE2000 Test Set kit with a PCMCIA card, parallel port dongle, or USB dongle, the above components plus documentation and software installation CD will be provided. The RS-232 Monitor Cable, DB-9 to DB-25 adaptors, NULL modem adaptor, and gender changer from the original test set kit will be retained and used with the BCOM-USB. The test set enabling device, BCOM-PCMCIA card or dongle, must be returned as part of the Upgrade Procedure.

When provided with a new, complete ASE2000 Communication Test Set, the BCOM-USB components together with the other standard test set kit cables and adaptors will be provided.

The front of the BCOM-USB device has a USB connector for connection to a PC and LED indicators for serial communication activity indications. Each channel has:

TX – Transmit Data
RX – Receive Data
RTS – Request To Send
CTS – Clear To Send
CD – Data Carrier Detect
ERR – Error Indication



Front View

The back of the BCOM-USB device has two DB-9 Male connectors and a Modem Power connector. The +5VDC Modem Power connector (MDM PWR OUT) is only for powering the ASE 2-channel Bell-202 Test Set Modem from the BCOM-USB device. **IT MUST NOT BE USED FOR ANY OTHER PURPOSE!**



Rear View



WHEN CONNECTING THE POWER CABLE BETWEEN THE BCOM-USB DEVICE AND 2-CHANNEL ASE BELL-202 TEST SET MODEM, THE USB CABLE BETWEEN THE PC AND BCOM-USB DEVICE MUST BE DISCONNECTED.

CONNECT ALL POWER AND RS-232 CABLES BEFORE CONNECTING THE BCOM-USB DEVICE TO THE PC.

The bottom of each BCOM-USB device contains a serial number which is used for device registration and BCOM-USB license management. For certain support and upgrade situations, you may be asked to provide this serial number.



Bottom View

RS-233 PIN-OUT

The following table illustrates the pin-out of the BCOM-USB 9-pin connectors.

DB-9	Signal Description
1	DCD – Data Carrier Detect
2	RXD – Receive Data
3	TXD – Transmit Data
4	DTR – Data Terminal Ready
5	Com – Common
6	RXCLKIN – Receive Clock In
7	RTS – Request To Send
8	CTS – Clear To Send
9	TXCLKOUT – Transmit Clock Out

I/O DRIVER INSTALLATION

This section describes the steps necessary to install the I/O drivers for the BCOM-USB Device. There are several sets of I/O driver distribution files for different versions of Windows and, for Windows 7, a set of driver files for 32-bit systems and another for 64-bit systems. It is extremely important that the correct set of files be used for the specific Windows environment. For Windows 7 systems, a set of digitally signed driver files are provided for both the 32-bit and 64-bit versions of the driver.

The BCOM-USB I/O Driver files are provided on the ASE2000 Communication Test Set software distribution CD and are also available for download from the ASE web site at:

<http://www.ase-systems.com/ASE2000-test-set/ase2000-downloads.asp>

The digitally signed Windows 7 versions of the driver are available on the ASE web site and on ASE2000 Communication Test Set software distribution CD Version 1.52 and later.

There are two separate sections below containing I/O driver installation instructions; one section for Windows 2000 / XP / Vista and another section for Windows 7. **Please note, a 64-bit version of the BCOM-USB driver is available only for Windows 7.**

There are many similarities in the driver installation instructions between Windows 2000/XP/Vista and Windows 7 but there are important differences so please follow the instructions appropriate for the version of Windows being used.

Regardless of the version of Windows being used, the driver installation process will involve the installation of two separate drivers for each of two serial I/O channels (COM Ports). There are four components which Windows must install for a complete installation. As a result, there are many repetitive steps which must be followed to insure a complete installation of the components required for the BCOM-USB I/O driver. **DO NOT ABORT THE INSTALLATION UNTIL ALL COMPONENTS HAVE BEEN INSTALLED.**

If installing from the ASE2000 Communication Test Set software distribution CD, insert the CD in the PC. The CD is configured to “auto run” the ASE2000 Installation procedure so cancel out of this operation. At this point, the Driver installation files can be copied to the PC hard driver and installed from there or installed directly from the CD.

Windows 2000 / XP / Vista I/O Driver Installation

NOTE: If you are installing the BCOM-USB I/O driver on a Windows 7 system, go to the section “**Windows 7 I/O Driver Installation**”.

The I/O driver files is distributed on the ASE2000 Installation CD as shown in Figure 1 below and may also be obtained from the ASE web site at www.ase-systems.com.

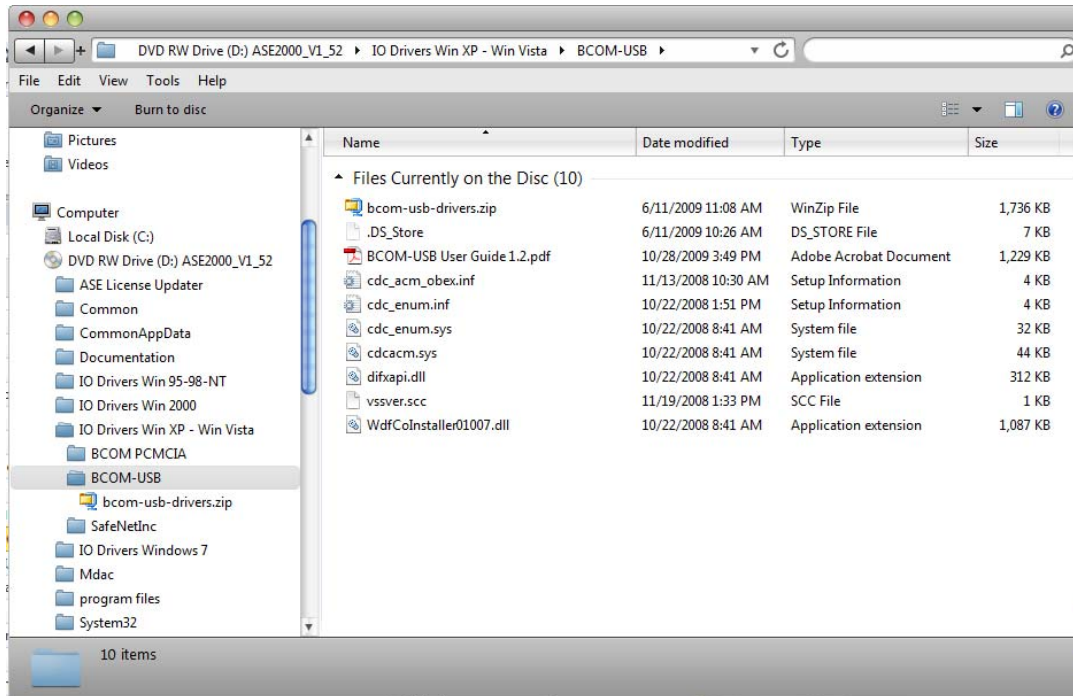


Figure 1

The set of files will be the same whether obtained from the Installation CD or the web site and the same set of files is used for Window 2000 / XP / and Vista.

Connect the BCOM-USB device to the PC using the supplied USB cable. Following the connection, Windows will launch the “New Hardware” Wizard. This will be used for the I/O driver installation.

1. When the following screen appears, select the radio button “No, not this time” and then select “Next”.

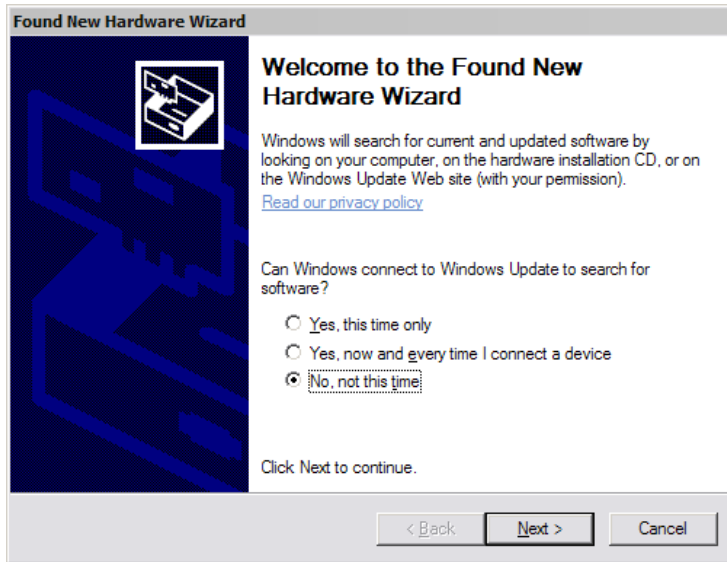


Figure 2

2. Select the radio button “Install from a list or specific location” then “Next”.

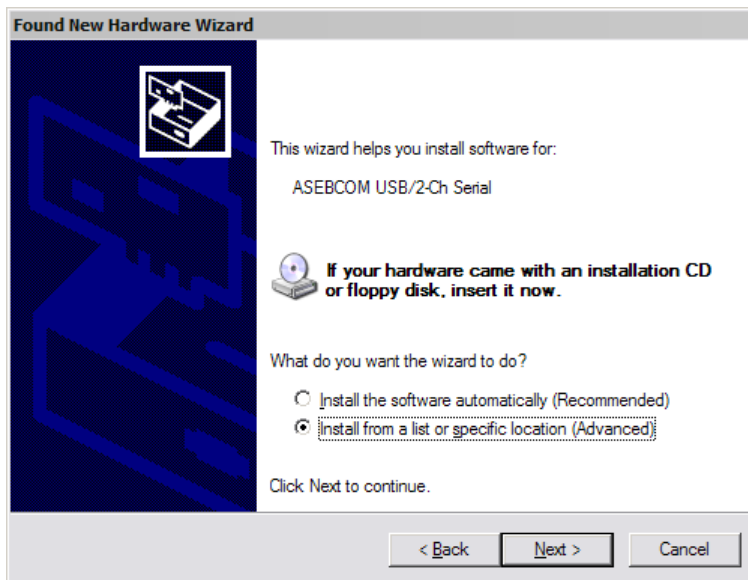


Figure 3

3. Browse to the folder containing the I/O driver installation files then select “Next”.

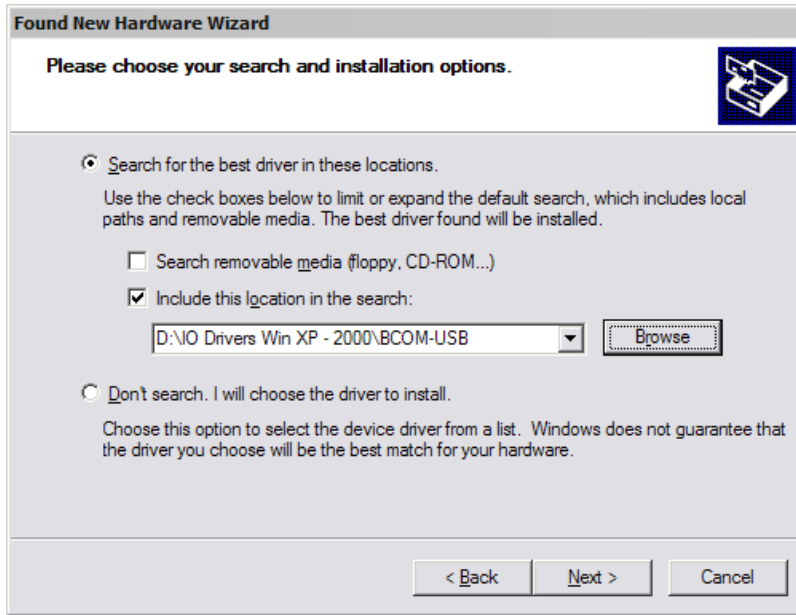


Figure 4

4. On some systems, Windows will issue several warning messages that the “Driver is Not Certified”. At each of these instances, select “Continue Anyway”.
5. When the “Next” button is selected, Windows will copy the driver files for the CDC Applied Systems enumerator.

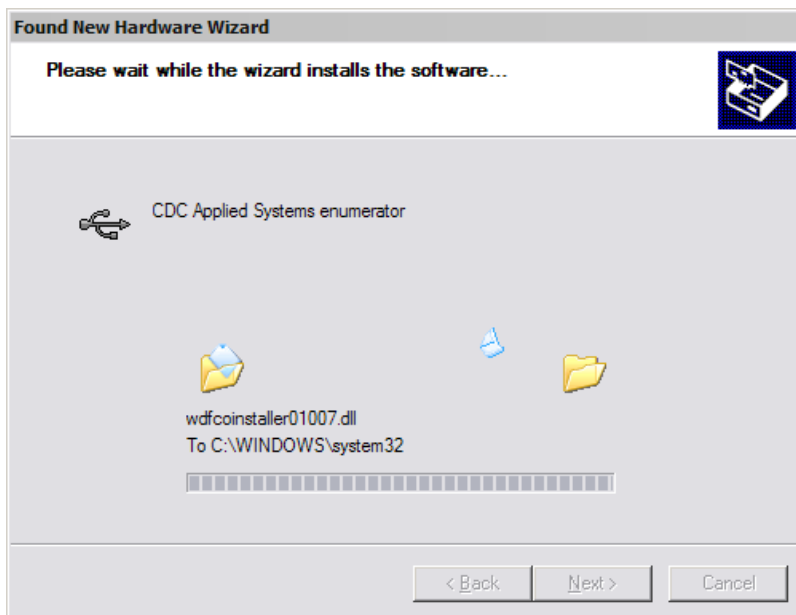


Figure 5

6. When the initial file copy has completed, the following screen will appear to indicate the “enumerator” driver for the first BCOM-USB port has completed.

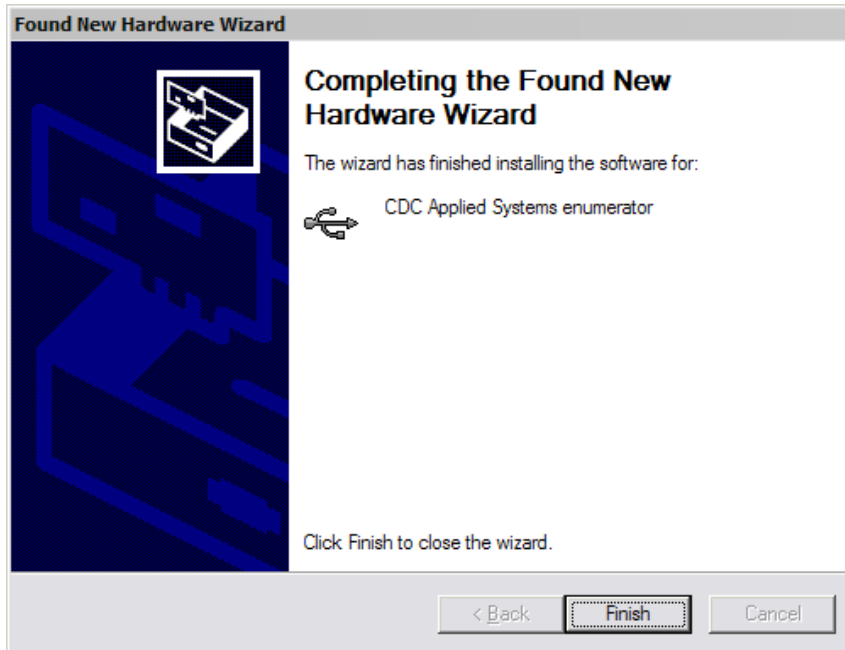


Figure 6

7. Select "Finish" to proceed with the next phase. The same sequence of steps as illustrated in Figure 2 through Figure 6 will be repeated to install the "enumerator" for the second BCOM-USB port.
8. When the "enumerator" for the second BCOM-USB port has completed, the same screen as shown in Figure 6 will be displayed.
9. Select "Finish" to proceed with installation of the BCOM-USB Comm Port portion of the procedure.
10. The following steps are virtually identical to the steps described previously but will be related to installing the second portion of the BCOM-USB driver files.

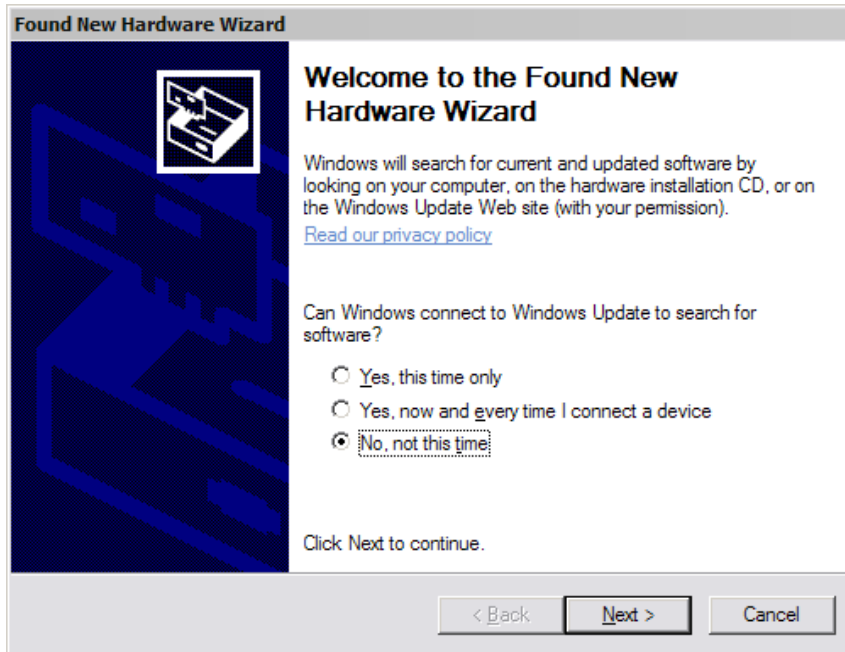


Figure 7

Note, the message is for installing the “usbcdacm_6_12328.....”

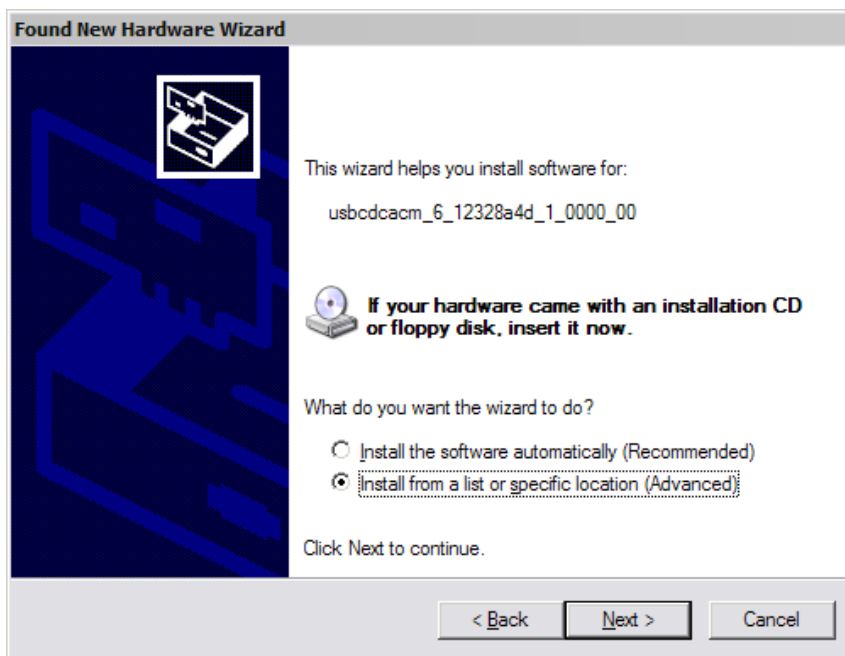


Figure 8

11. Please note, the files for installing the “ASE BCOM-USB Comm Port” are in the same location as for the “enumerator”.

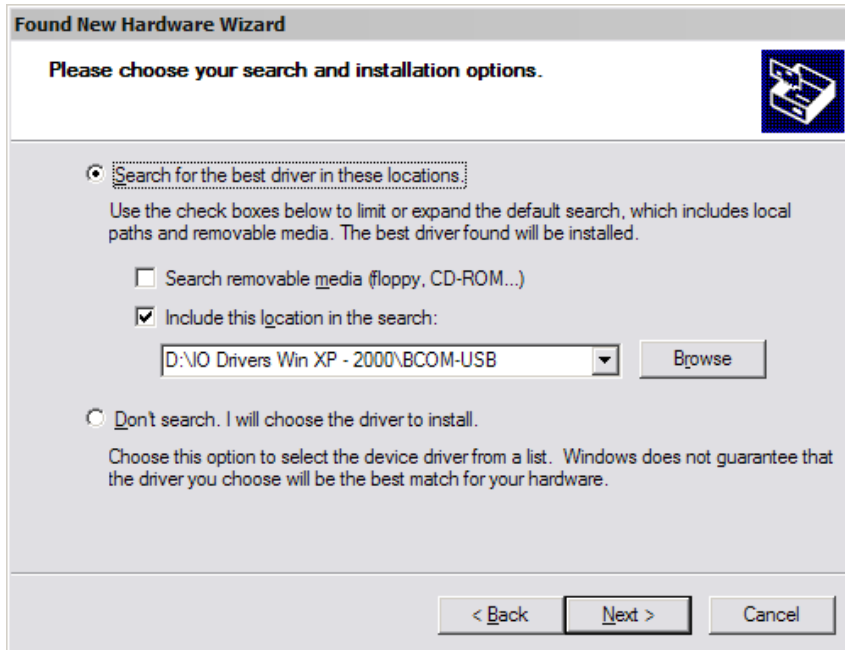


Figure 9

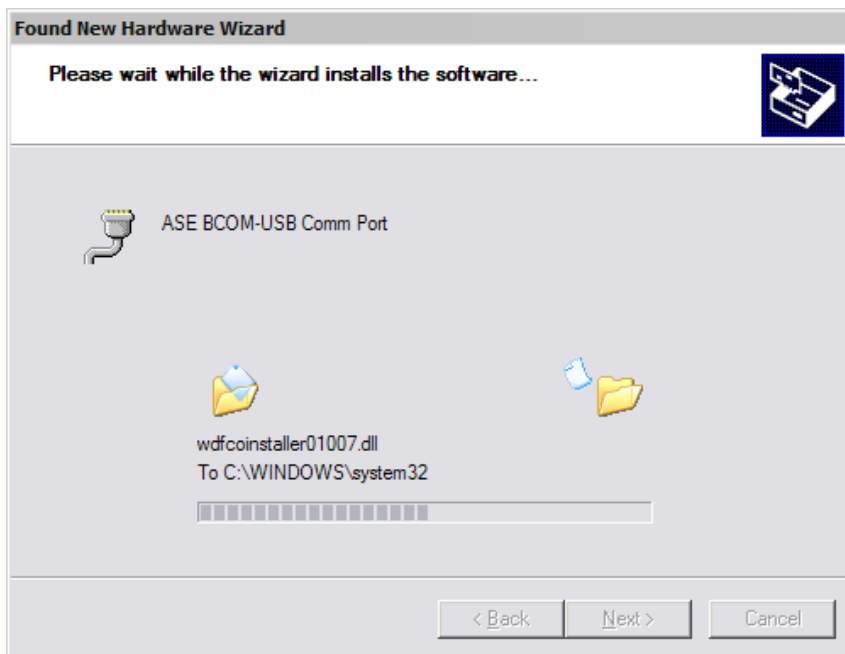


Figure 10

12. When the files for the first BCOM-USB Comm Port have been copied, the following screen will appear.

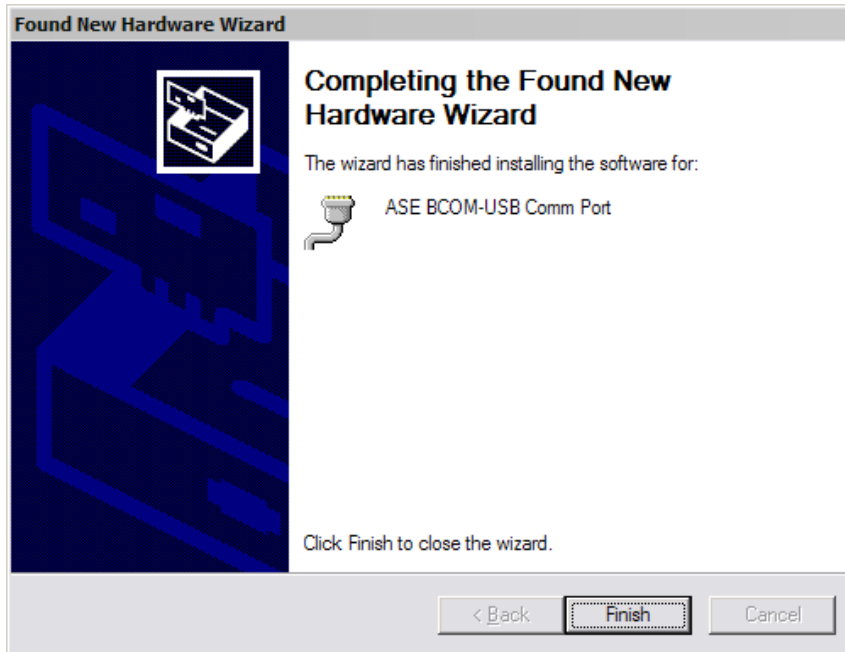


Figure 11

13. As with the “enumerator” installation, the steps illustrated in Figures 7 through Figure 11 will be repeated to install the second BCOM-USB Comm Port.

Following the completion of installation for the second BCOM-USB Comm Port, a message will appear in the lower right corner of the screen that:

Your New Hardware is installed and is ready to use

At this point, the driver installation is complete and the BCOM-USB is ready for use.

Following a successful driver installation, the Device Manager screen (Control Panel > System > Hardware tab) will show the devices:

- Ports (COM and LPT)
 - ASE BCOM-USB Comm Port (COMxx)
 - ASE BCOM-USB Comm Port (COMyy)
 - Universal Serial Bus Controllers
 - CDC Applied Systems enumerator
 - CDC Applied Systems enumerator
- USB Composite Device

These entries are all associated with the BCOM-USB device. Also, since the BCOM-USB is a Plug-n-Play device, the entries will only appear when the device is connected.

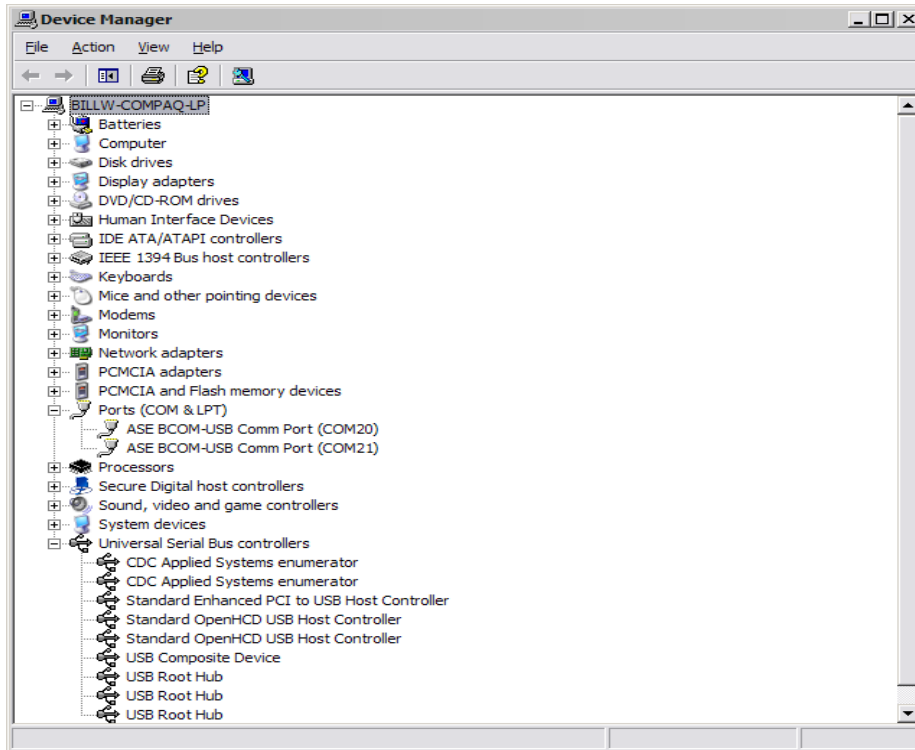


Figure 12

Windows 7 I/O Driver Installation

NOTE: If you are installing the BCOM-USB I/O driver on a Windows 2000/XP/Vista system, go to the section “**Windows 2000/XP/Vista I/O Driver Installation**”.

An example of the folder set on the ASE2000 Communication Test Set software distribution CD is shown below. For installing on a Windows 7 64-bit system, browse to the “IO Drivers Windows 7\BCOM-USB\x64 or \x86”. The \x86 folder is used on 32-bit systems and \x64 on 64-bit systems. Once in the appropriate folder, the procedures are the same for 32 or 64 bit systems.

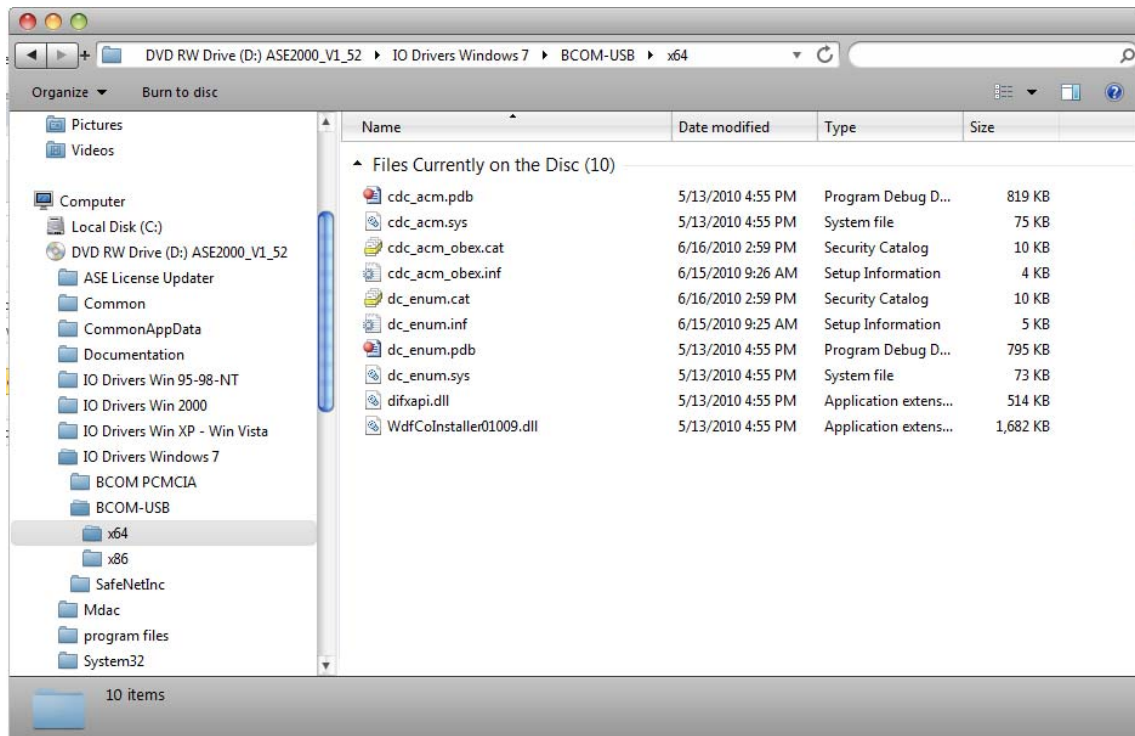


Figure 13

IMPORTANT! PLEASE NOTE: Windows 7 I/O driver installation is different from previous versions of Windows and it is extremely important that the following instructions be followed carefully to avoid an incorrect installation. The “automatic” driver installation feature of Windows 7 does not work with the BCOM-USB driver. It is necessary to use the manual installation procedure described below.

Pre-installation Set-up

There are a number of steps involved for a complete installation of both COM ports for the BCOM-USB device. It is extremely important that the step-by-step procedures described below be followed completely.

1. In order to initiate certain steps of the installation, it is necessary to use the Device Manager screen. From the Windows Start menu, select “Control Panel” and then select “Hardware and Sound”.

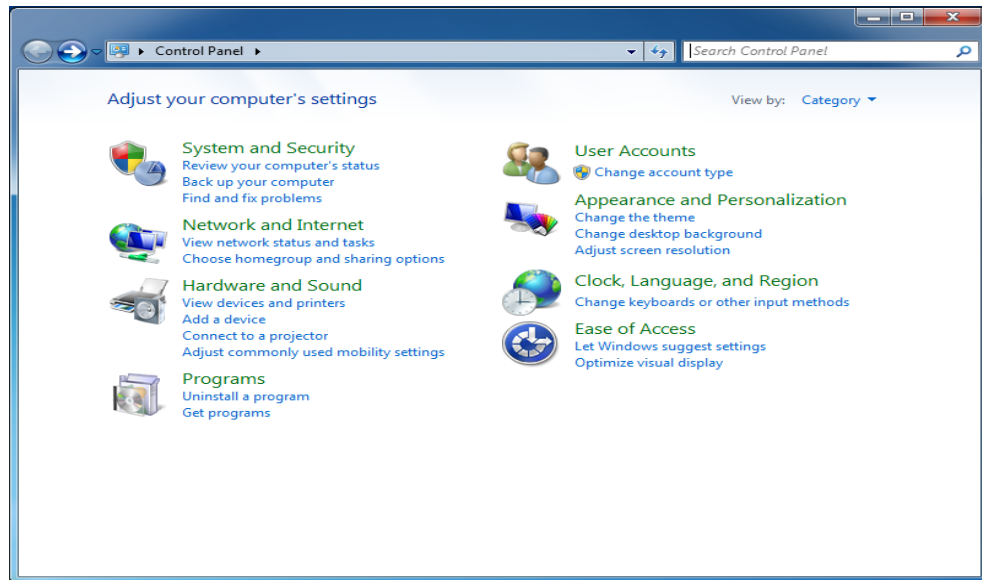


Figure 14.

2. Select “Device Manager”

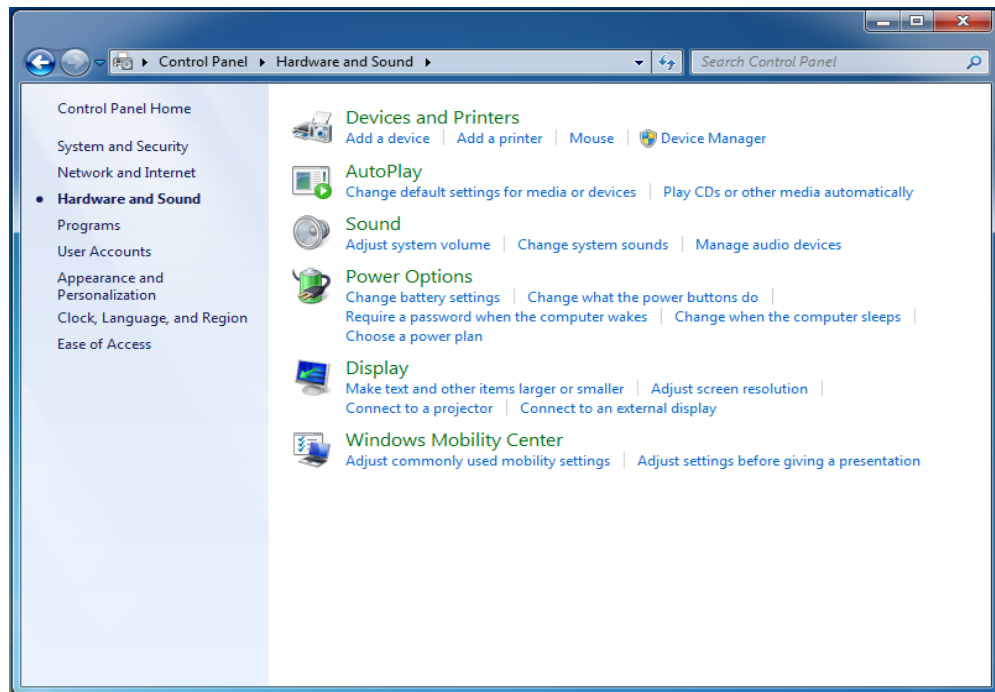


Figure 15.

3. The screen shot below, Figure 16, is similar to one you should see on your system prior to installation of the BCOM-USB drivers. The Figure 17 screen shot illustrates the Device Manager screen following driver installation.

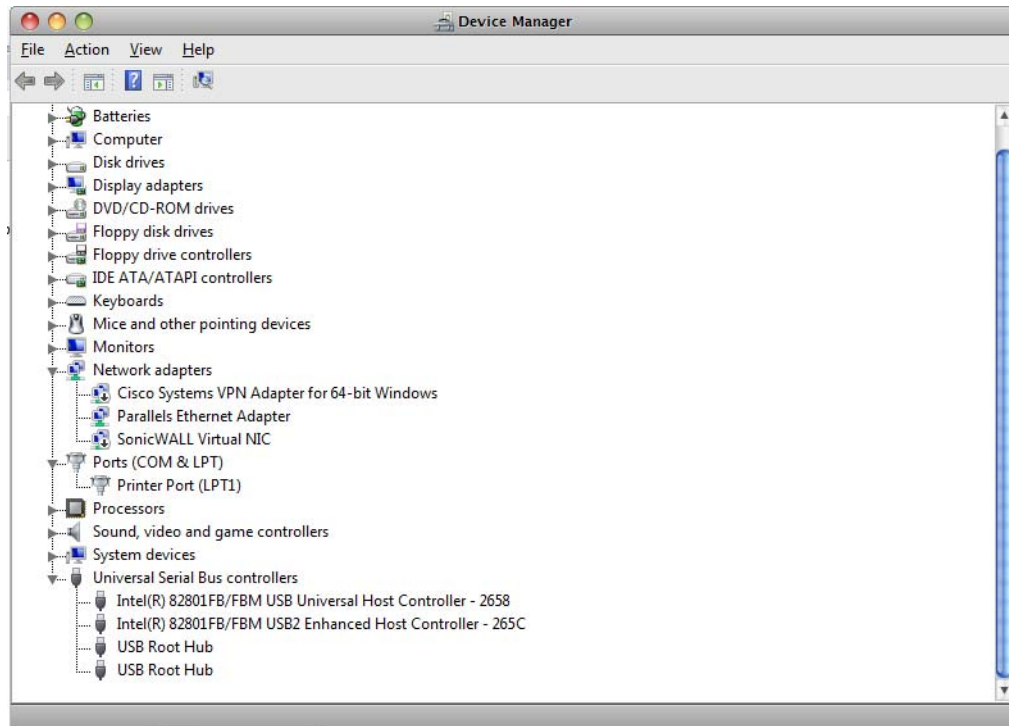


Figure 16 Pre-Driver Installation

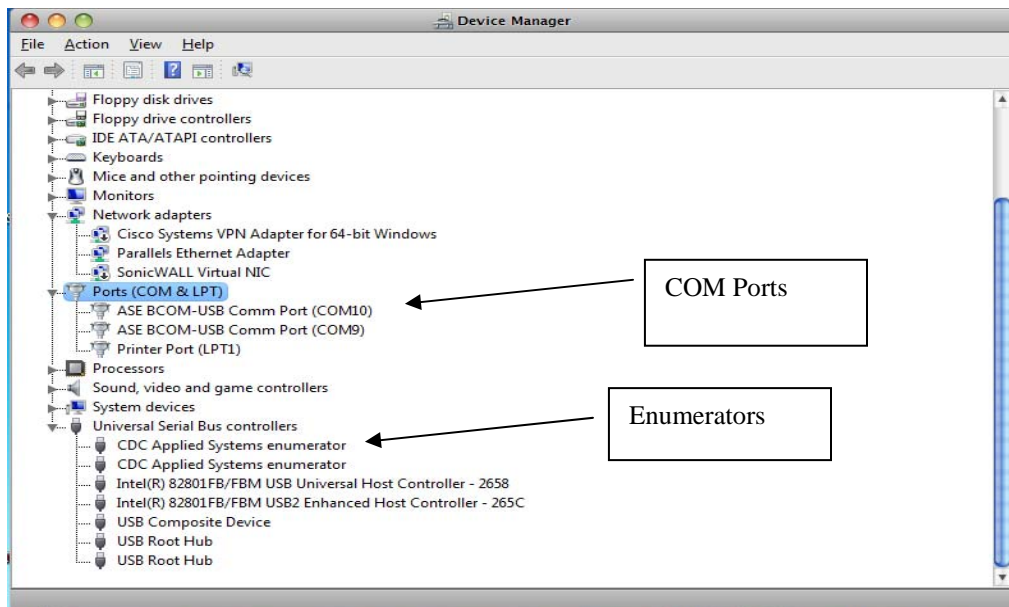


Figure 17 Post-Driver Installation

In the Post-Driver Installation screen shot, there are two new sets of entries. Under Ports (COM & LPT) the COM ports ASE-BCOM-USB Comm Port

(COM9) and (COM10) have been added and under Universal Serial Bus controllers two CDC Applied Systems enumerator entries have been added, one for each BCOM-USB COM port.

4. Identify the location containing the I/O Driver files to be used for the installation. In the steps below, it will be necessary to “point” the windows installer to this folder. The files can be obtained from the ASE2000 Communication Test Set installation CD or downloaded from the ASE web site at:

<http://www.ase-systems.com/ASE2000-test-set/ase2000-downloads.asp>

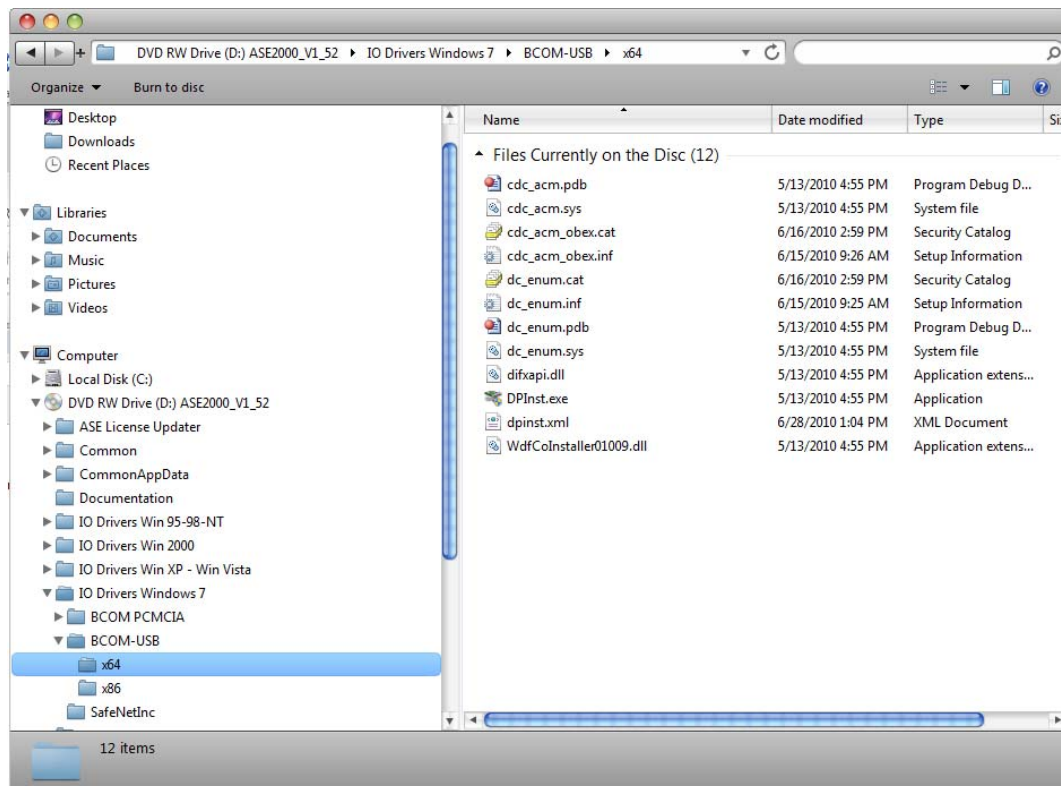


Figure 18

Driver Installation

This section contains the step-by-step instructions for the actual driver installation. Please follow the steps carefully and verify the results of each step with the corresponding screen shots. Due to system variations, some information may be slightly different but the general content should be similar.

1. Connect the USB cable between the BCOM-USB device and the PC. Upon connection, Windows will read certain device information from the BCOM-USB device and attempt to locate a previously installed I/O driver for the device. Since no driver has been previously installed, Windows will be unsuccessful in locating the driver and will display the following screens. Initially, a small message block will be shown in the lower left

corner of the screen indication the attempt to install the driver with a “Click Here” target to display details.

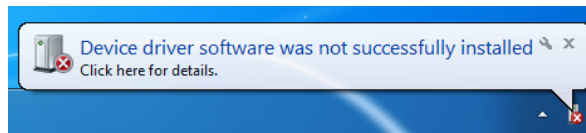


Figure 19

2. Click the indicated target to see the screen shown below. Depending on previous driver installations, there are a couple of variations of screen content.

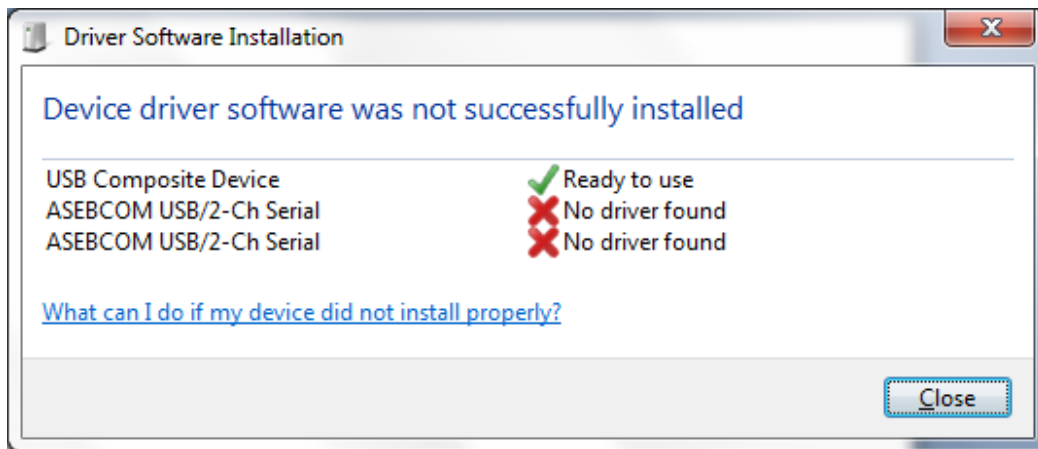


Figure 20

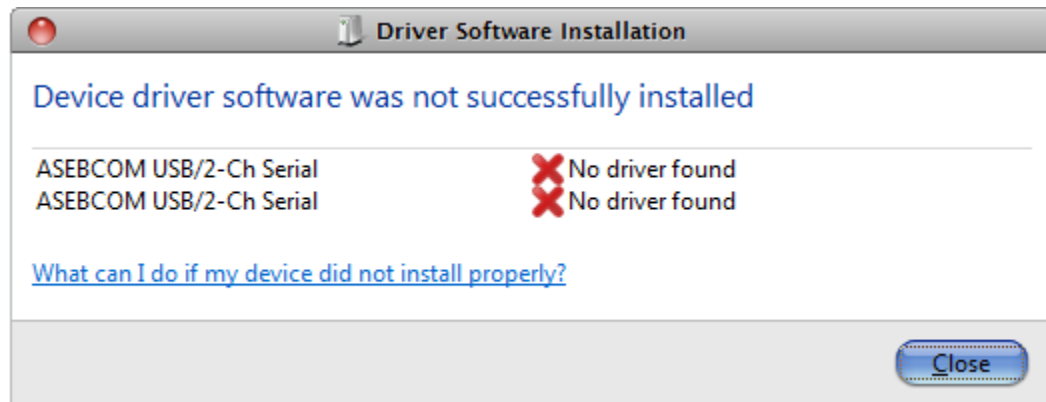


Figure 21

3. Since there are two COM ports, there will, in most cases, be two messages or two entries for each step. When status for each “ASEBCOM USB/2Ch Serial” shows “No driver found”, select “Close”

4. Refer to the Device Manager screen and there should be two new entries under Other devices for the “No driver Found” BCOM-USB ports.

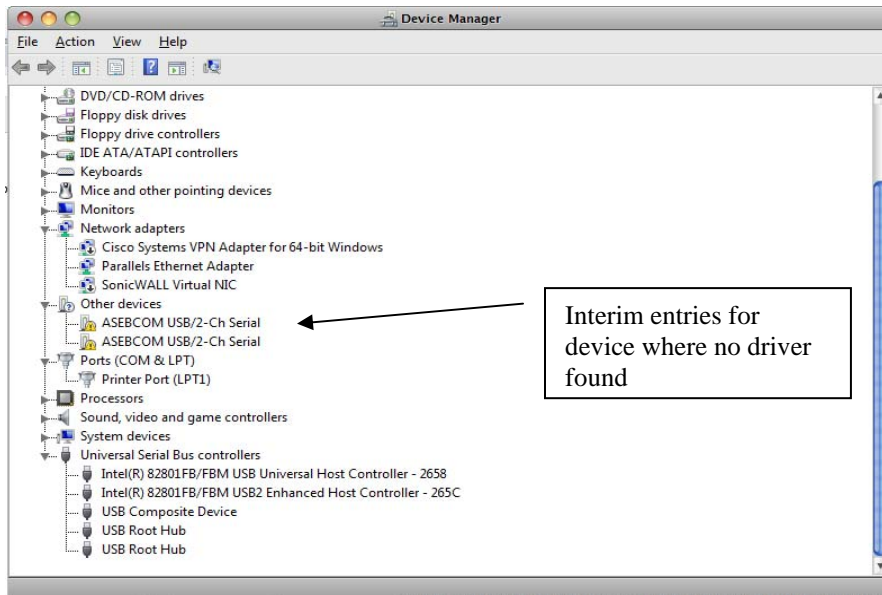


Figure 22

5. At this point, manually direct Windows to install the drivers. Under Other devices, right-click on the **first** “ASEBCOM USB/2-Ch Serial” entry and select “Update Driver Software”. **It is extremely important these entries are selected in the correct order so that the COM ports will be assigned to the BCOM-USB ports in the correct order.**

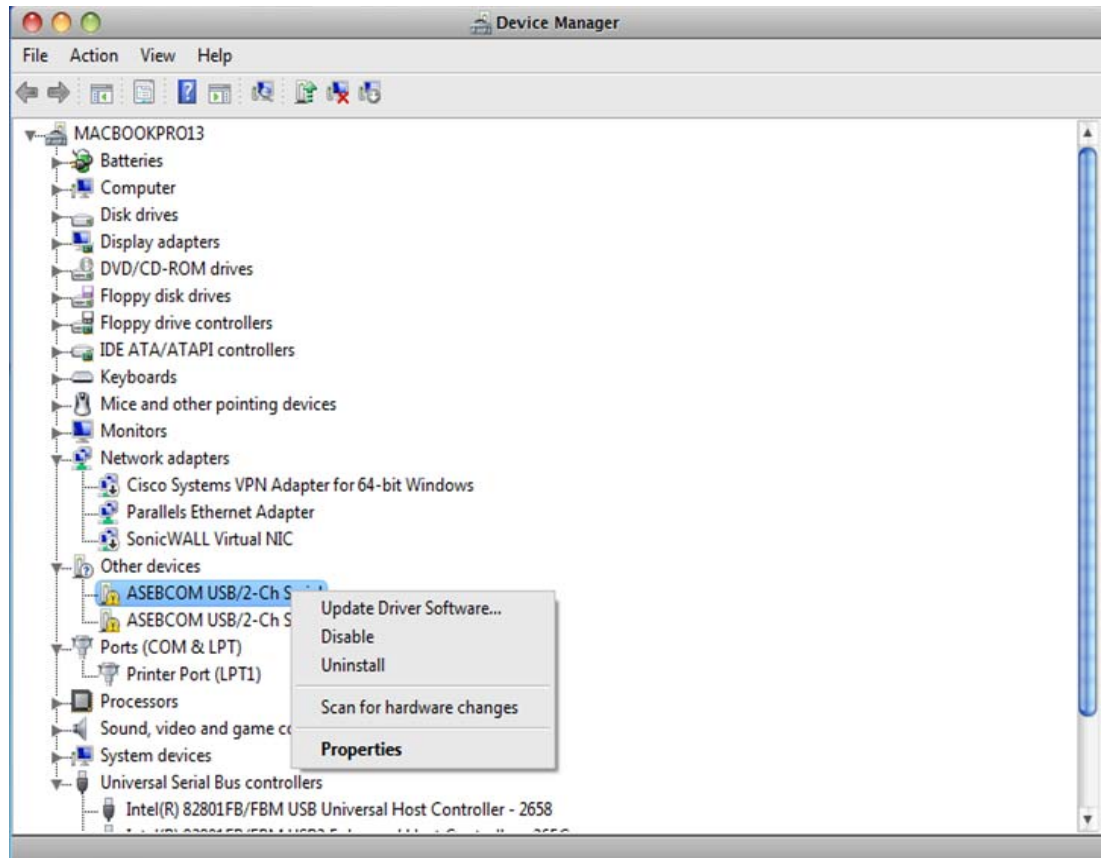


Figure 23

6. When the following screen appears, select the second option, “Browse my computer for driver software”.

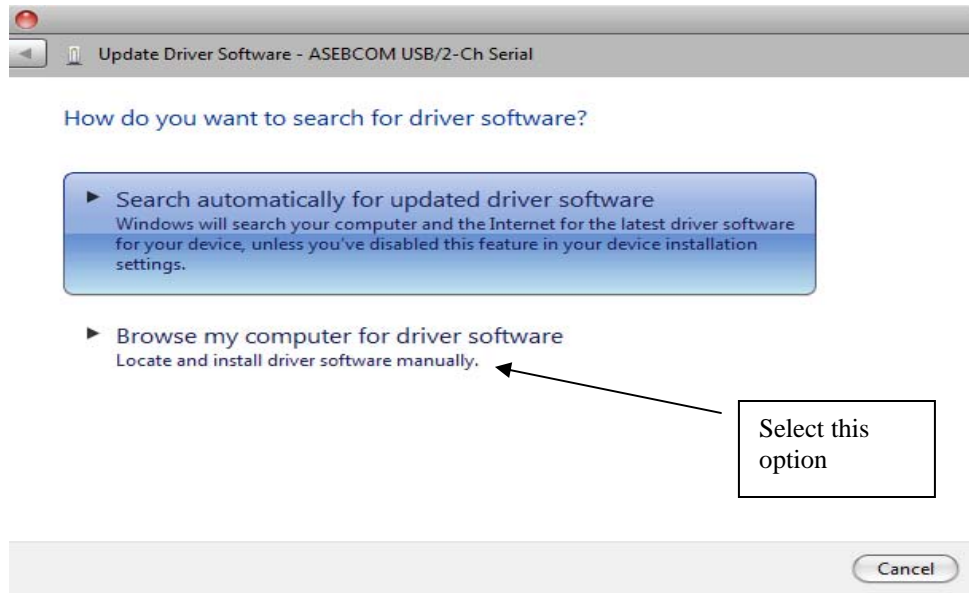


Figure 24

7. Select the Browse button and browse to the folder containing the driver files. In the example below, the system is a Windows 7 64-bit so the folder for the 64-bit version of the driver, “x64”, is selected. If you are installing on a Windows 7 32-bit system, select the “x86” folder. When the correct folder has been specified, select “Next”.

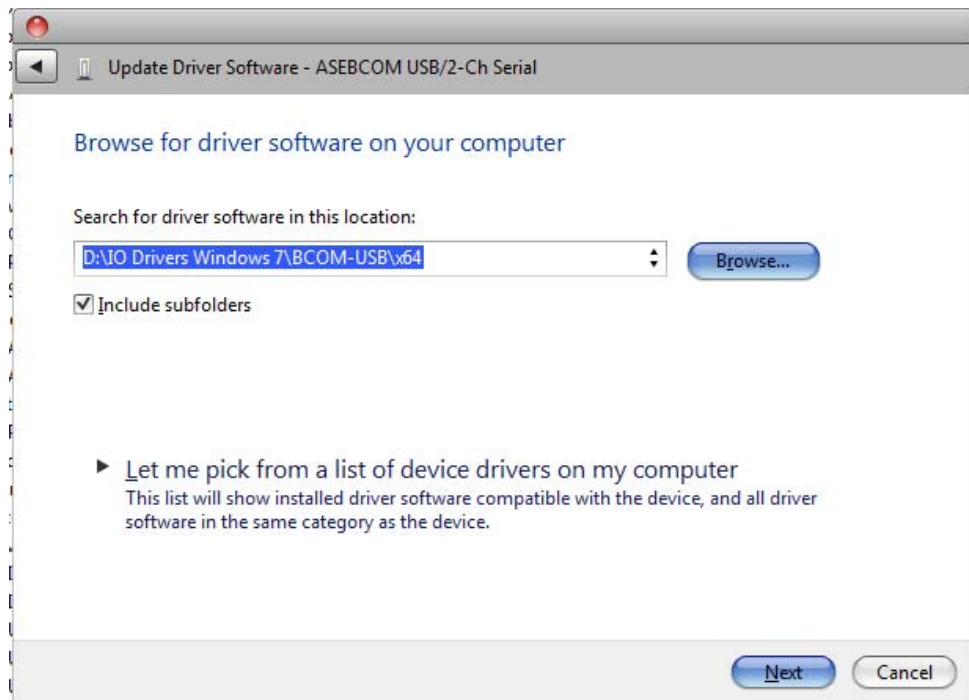


Figure 25

8. If digitally signed software from Applied Systems Engineering, Inc. has not previously been installed on the PC, the following screen will be displayed. If the check box <Always trust software from “Applied Systems Engineering, Inc.”> is checked before selecting the Install button, this message will not be displayed in the future. Otherwise, just select the Install button.

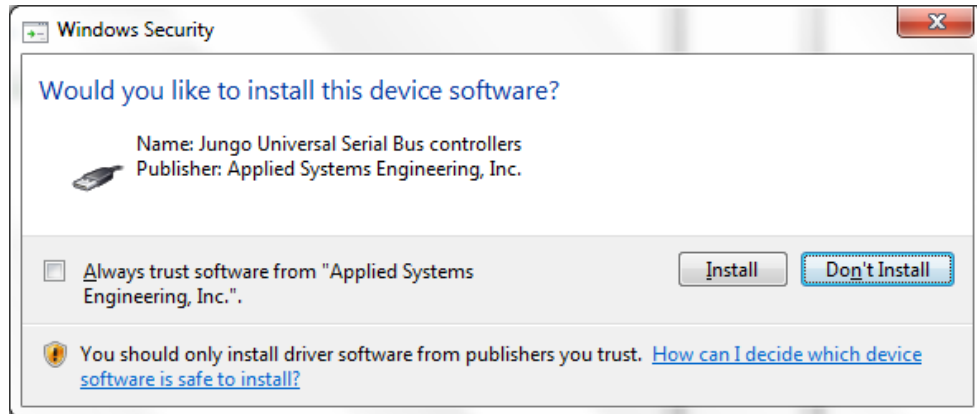


Figure 26

9. Windows will begin the driver file copy and install.

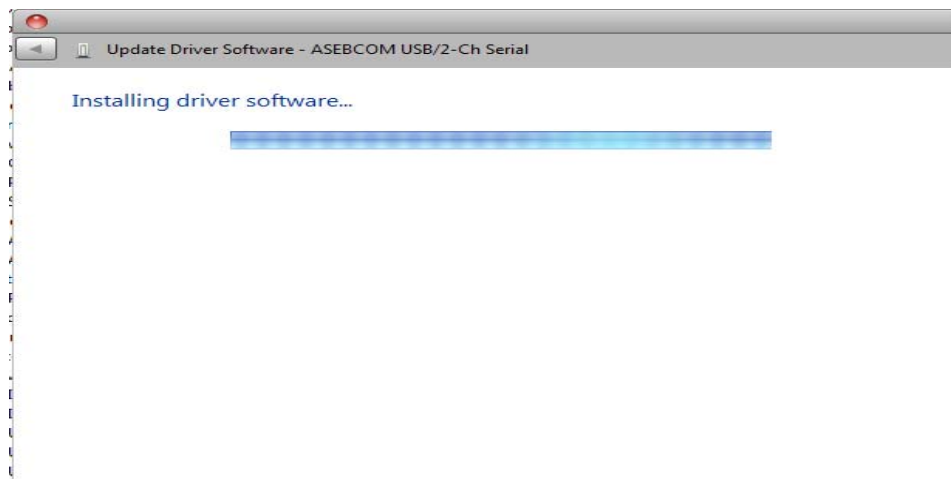


Figure 27

10. Upon completion of this phase, Windows will display the following screen. **Do not** select the “Close” button until the Device Manager screen updates showing the entry under Ports (COM & LPT) and entry under Universal Serial Bus controllers as shown in Figure 29 or until the screen shot shown in Figure 30 is displayed. Note: Actual COM port numbers will vary on different systems. If this screen is not displayed at this point, skip to Step 11 below for an alternative procedure.

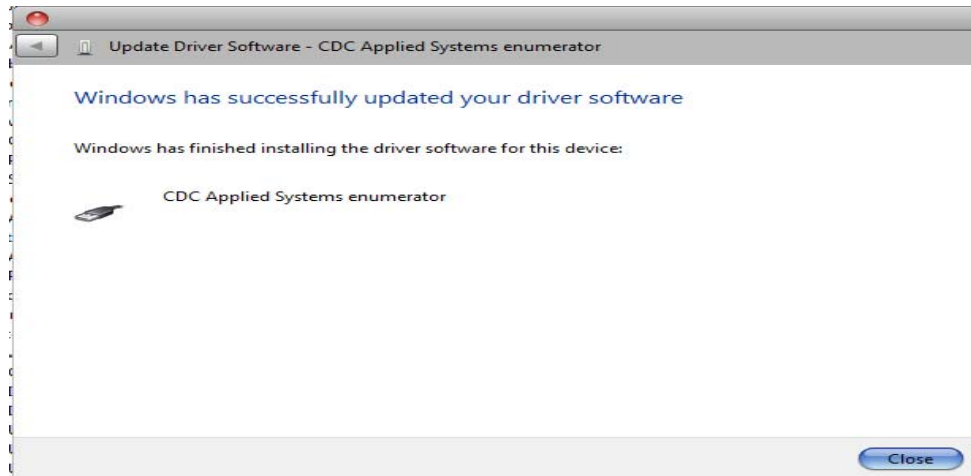


Figure 28

11. Upon completion of this installation phase, the Device Manager screen will be updated to indicate the first ASE BCOM-USB Comm Port and CDC Applied Systems enumerator have been installed.

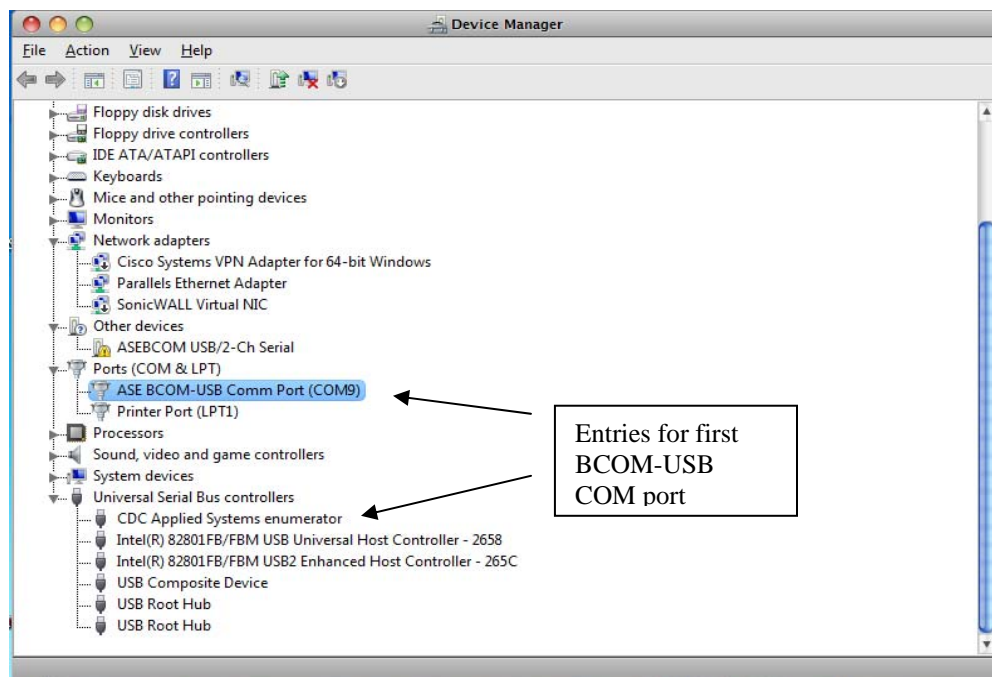


Figure 29

12. On some systems, Windows only performs a partial install in this phase and an additional manual step is required to complete installation of the first BCOM-USB COM port. If the following screen (or one similar) is displayed following Step 9.

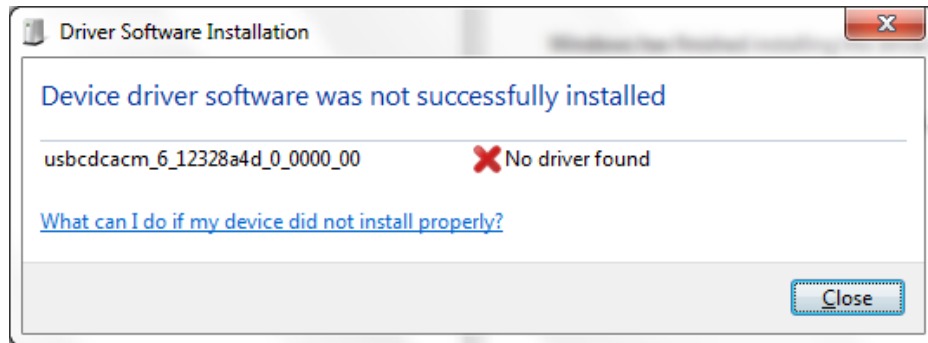


Figure 30

13. To complete the COM port installation when this partial install occurs, right-click the line containing the entry “usbcdacm_6_12328a4d_0_0000_00” and then select “Update Driver Software”.

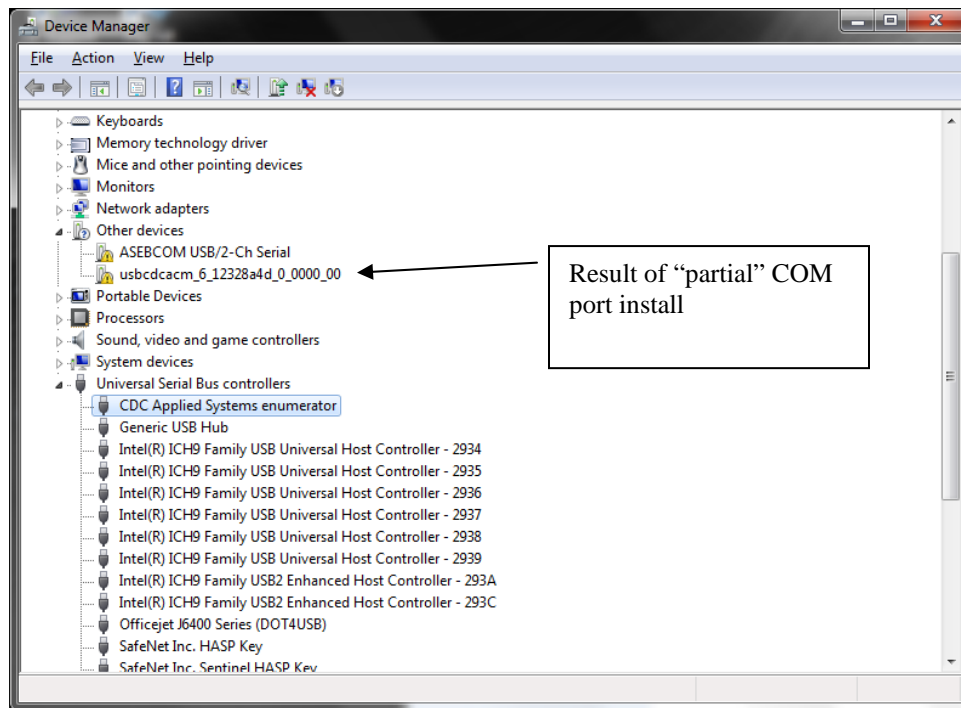


Figure 31

14. Windows will proceed with the COM port installation and will display the following message when complete and the first BCOM-USB COM port will have been installed and the Device Manager screen should appear as shown in Figure 29 above.

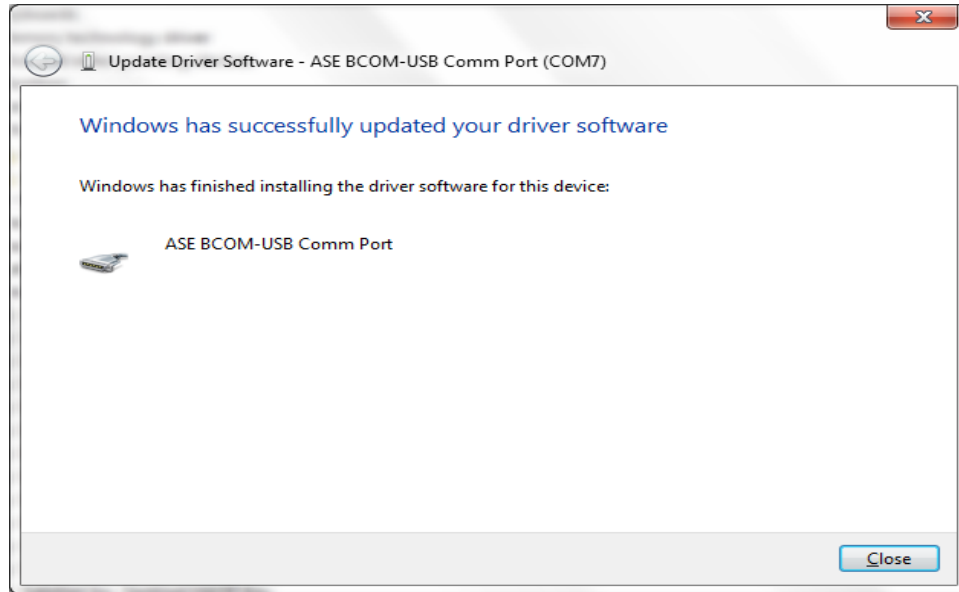


Figure 32

15. To install the second BCOM-USB COM port, select (Right-click) the remaining “ASEBCOM USB/2-Ch Serial” entry under Other devices then select “Update Driver Software” and follow Steps 5 – 8 above.

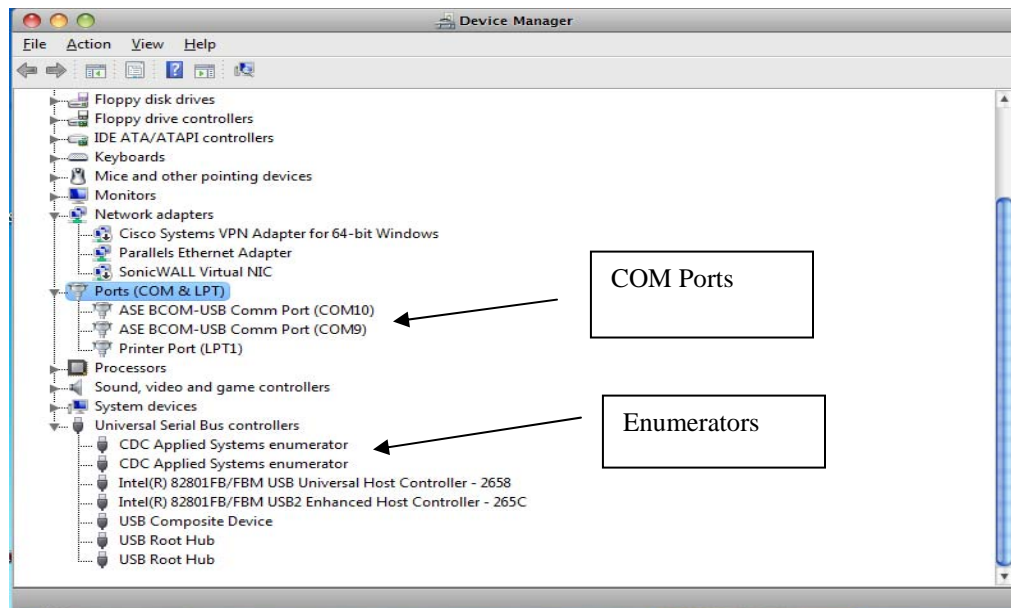


Figure 33

When both BCOM-USB ports have been installed, the Device Manager screen will appear as follows, the installation will be complete, and the BCOM-USB device ready for use.

ASE LICENSE/FIRMWARE UPDATER

OVERVIEW

This ASE License/Firmware Updater program will be used whenever a new BCOM-USB device license or new device firmware must be installed.

The BCOM-USB device is the first ASE test set I/O device that utilizes on-board license information and field updatable firmware that utilizes an update program rather than firmware chip replacement.

Normally, the License will not need to be updated. However, for PCs running ASE2000 Version 1.47 or higher, where the BCOM-USB is replacing an ASE 2-Channel PCMCIA Card or Sentinel Security Plug (dongle) as part of a BCOM-USB Upgrade transaction, the BCOM-USB devices will be shipped with a 60 day license. The license will permit test set operation with the BCOM-USB device for up to 60 days (from the date of shipment) or 75 executions of the test set using the BCOM-USB device. When the original test set equipment (PCMCIA card or Sentinel Dongle) is returned to ASE, a new, unlimited, license file will be provided. If the unlimited license file is not installed, the BCOM-USB will stop functioning. The only way to re-activate is to install a new, unlimited, license.

Where the BCOM-USB is provided with a new test set purchase, the BCOM-USB will be delivered with an unlimited license.

If the BCOM-USB has a Limited License, the following ASE2000 Test Set message will appear each time a request to start communication is made. The specific date and “allowed execution count” will depend on when the device was shipped and the number of times the test set applications has been run under the Limited License.

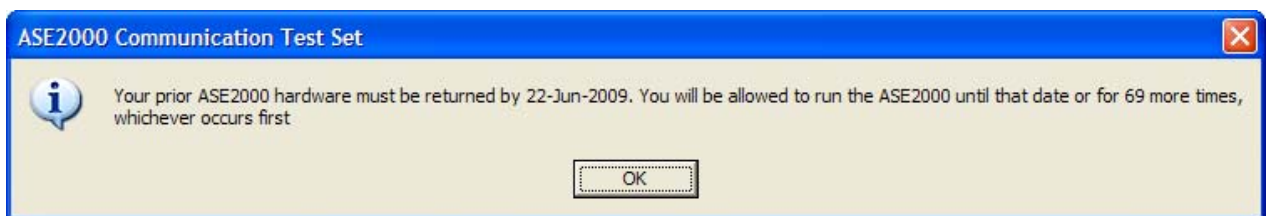


Figure 34

LICENSE/FIRMWARE UPDATER OPERATION

Following installation, the application will automatically launch. If a BCOM-USB device is currently connected, the following screen will appear:

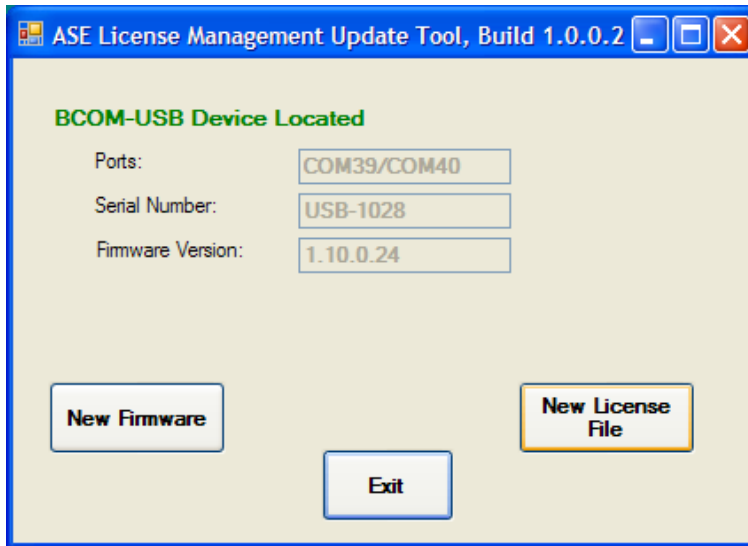


Figure 35

The values show in the boxes will be specific to the PC Com Port assignment, Serial Number of the BCOM-USB device, and current firmware version number.

When the License/Firmware Updater is launched, it will attempt to locate a BCOM-USB device. If one is not attached, the screen will look as follows:

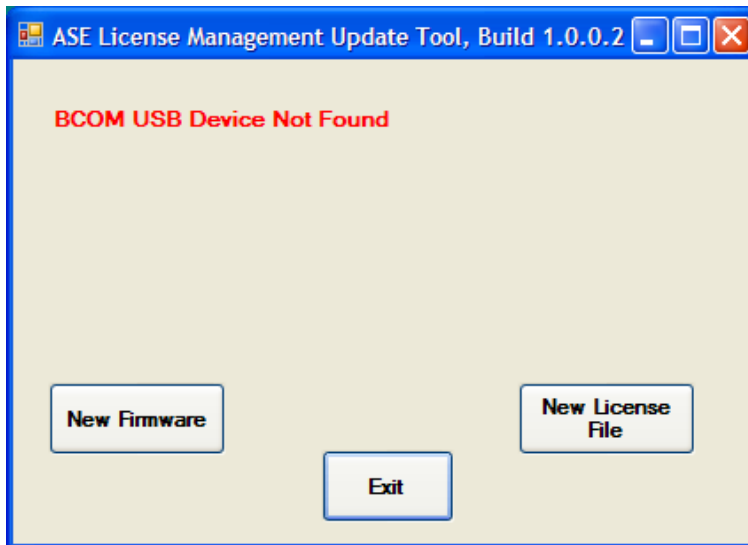


Figure 36

NEW LICENSE FILE INSTALLATION

New License files will normally be distributed via e-mail. Save the new License file in a convenient place on the PC hard drive and start the ASE License/Firmware Updater program:

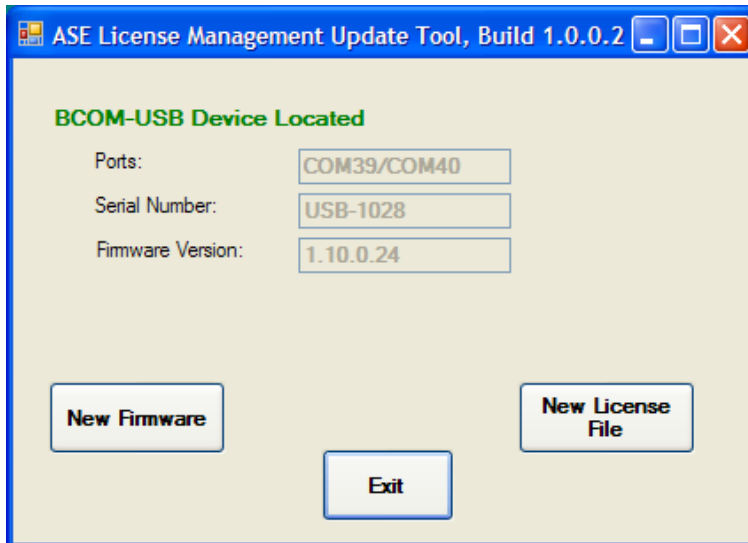


Figure 37

Select the “New License File” button and the contents of the default folder will appear. Browse to the folder containing the new license file and select the appropriate file. Note, the Device Serial Number is part of the file name.

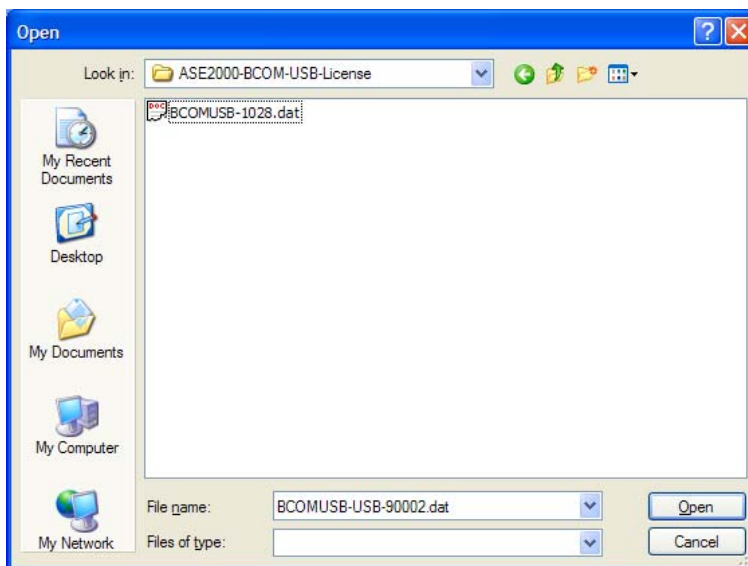


Figure 38

When you double-click on the file name or select “Open”, the program will write the new license file to the BCOM-USB device. If the update is successful, the following message will appear:



Figure 39

NEW FIRMWARE INSTALLATION

The ASE License/Firmware Updater is also used to install new firmware in the BCOM-USB device. The BCOM-USB device was released in April 2009 and, although it underwent extensive testing prior to release, it is possible that new releases of the firmware will be necessary to correct problems found after shipment. Registered users will be notified by e-mail of new firmware releases and new release notices will also be posted and available for download from the ASE web sit at www.ase-systems.com.

Save the new Firmware file in a convenient place on the PC hard drive and start the ASE License/Firmware Updater program:

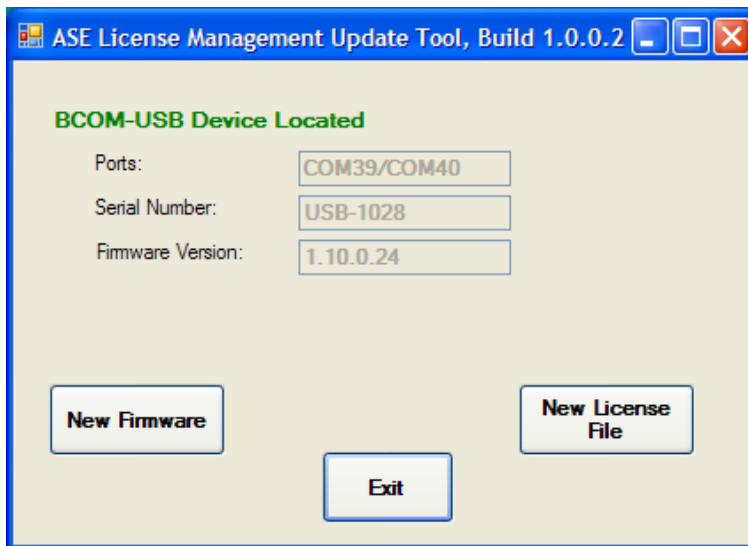


Figure 40

Select the “New Firmware” button and the contents of the default folder will appear. Browse to the folder containing the new firmware file and select the appropriate file. Note, the firmware release number is part of the file name.

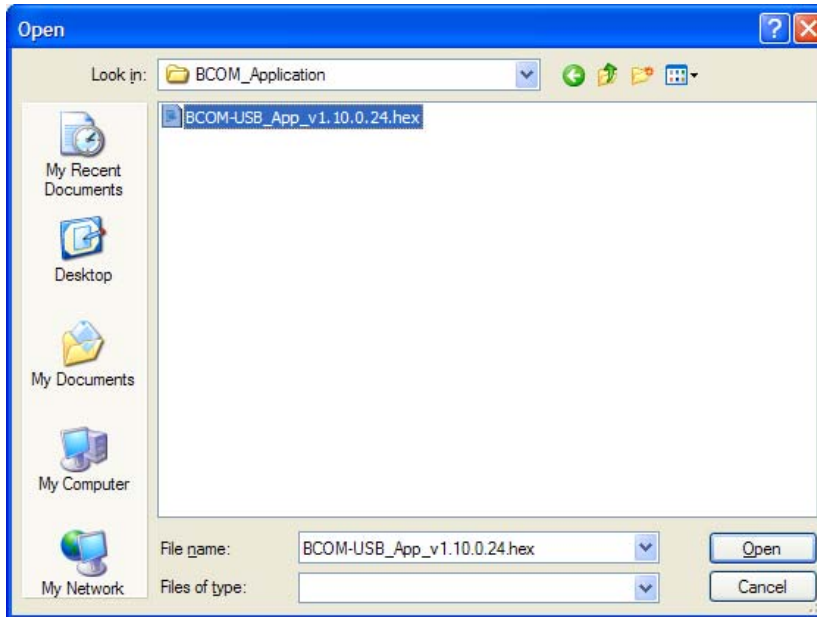


Figure 41

When you double-click on the file name or select “Open”, the program will begin writing the new firmware to the BCOM-USB device and a progress bar will be shown on the program main screen.

If the update is successful, the message:

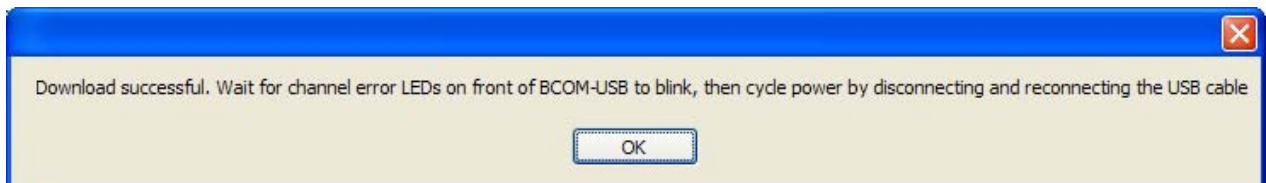


Figure 42

will be displayed. At this point, the “ERR” LEDs on the BCOM-USB device should be alternating on and off (ping-pong). To activate the new firmware, it is necessary to power-off and power-on the BCOM-USB device. This is accomplished by removing and re-connecting the USB cable. After the firmware update and re-start of the BCOPM-USB device, the current firmware version will be displayed on the ASE License/Firmware Updater main display page “Firmware Version:” section.

LICENSE/FIRMWARE UPDATER PROGRAM INSTALLATION

This section describes the steps necessary to install the ASE License/Firmware Updater. The Updater is distributed on the ASE2000 Installation CD as shown in Figure 43 below and may also be obtained from the ASE web site at www.ase-systems.com.

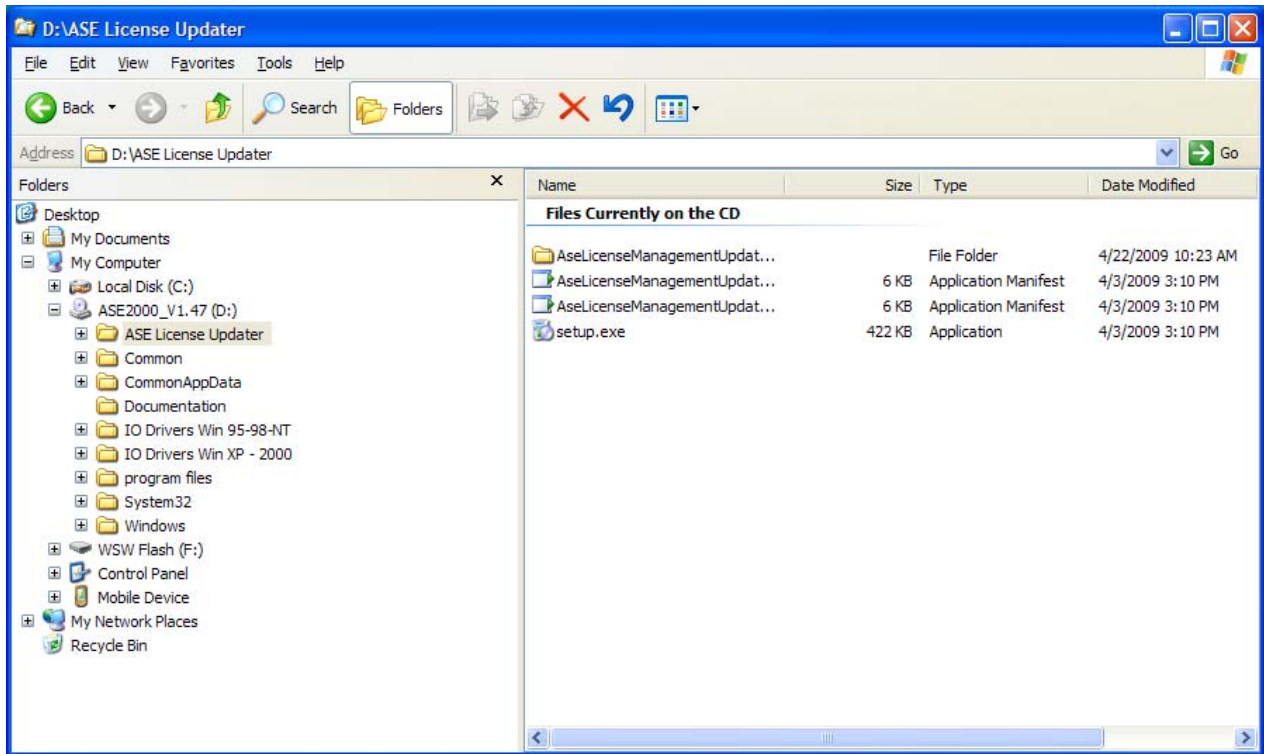


Figure 43

To initiate installation of the ASE License/Firmware Updater program, double click on the “setup.exe” file and follow the on-screen instructions.

DOCUMENT REVISION HISTORY

Revision	Date	Comment
1.0	April 22, 2009	Initial Release
1.1	April 27, 2009	Re-formatted for better ordering of information
1.2	October 28, 2009	Added separate I/O driver installation instructions for Windows 7
1.3	July 2, 2010	Updated Windows 7 I/O Driver Installation instructions

This page intentionally left blank